

# GEOLOGICAL MAP OF THE NW HIMALAYA

by Albrecht Steck

100km

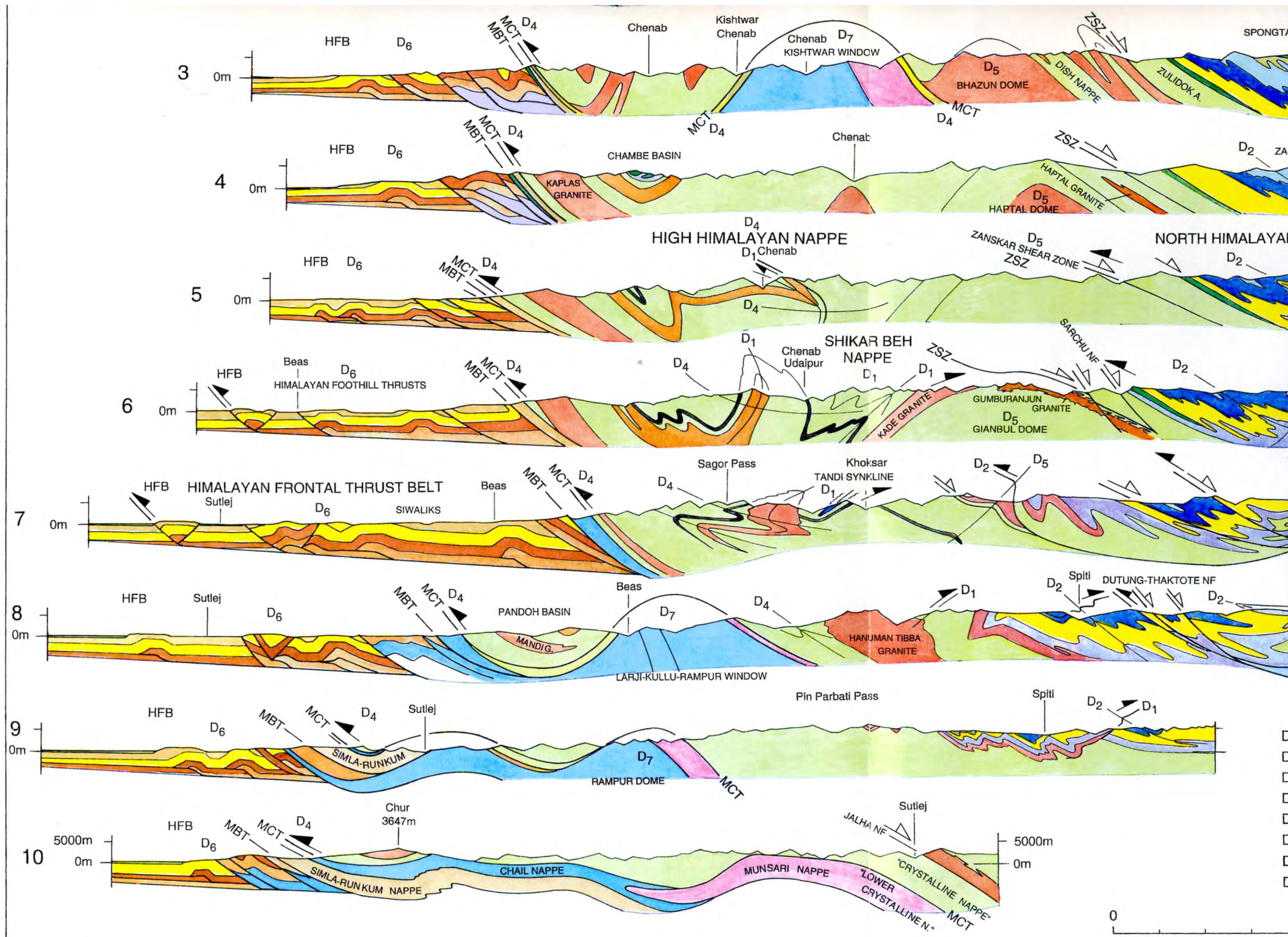


### LEGENDE NW-HIMALAYA

#### LADAKH INTRUSIVES AND INDUS SUTURE ZONE

- INDUS MCLASSE**
  - 1 Chiling and Butun-Kargil Formations
  - 2 Nuru sandstones
  - 3 Gorgamula - Hema - Nuru Molasse
  - 4 Nuru - Drogga flysch
  - 5 Basgo and Temengang Molasse
  - 6 Tar Formation
  - 7 Khasi limestones
- OCEANIC CRUST, SPONGTANG KLIPPE, KARZOK UNIT**
  - 8 Ophiolites
  - 9 Ophiolitic mélange
- VOLCANIC ARC AND SEDIMENTS**
  - 10 Nidar-Dras Formation
- QUATERNARY OF KASHMIR**
  - 11 Alluvial plains, recent river terraces
  - 12 Karez, older river terraces
- TERTIARY METAMORPHISM AND MAGMATISM**
  - 13 Leucogranite
  - 14 Intrusive + K-feldspar leucogranite
  - 15 Leucogranite + K-feldspar leucogranite
  - 16 Leucogranite + K-feldspar leucogranite
  - 17 Leucogranite + K-feldspar leucogranite
  - 18 Leucogranite + K-feldspar leucogranite
  - 19 Leucogranite + K-feldspar leucogranite
  - 20 Leucogranite + K-feldspar leucogranite
  - 21 Leucogranite + K-feldspar leucogranite
  - 22 Leucogranite + K-feldspar leucogranite
  - 23 Leucogranite + K-feldspar leucogranite
- NEOTETHYAN SLOPE**
  - 14 Lamayuru Formation
- NEOTETHYAN SHELF (Late Permian - Early Tertiary)**
  - 15 Tertiary siltstones
  - 16 Shingra-La-Kesi limestones, Kong shales
  - 17 Chikim and Fatula limestones
  - 18 Gaural sandstones
  - 19 Sipi shales
  - 20 Fe oolites and Ligpat Beds
  - 21 Gaural sandstones, Chikim limestones
  - 22 Ligpat beds
  - 23 Koko Formation
  - 24 Mesozoic (undifferentiated)
  - 25 Liang Group
  - 26 Kuling Formation
- GONDWANAN SERIES (Neo-Proterozoic - Permian)**
  - 24 Panjal Traps
  - 25 Chikim Formation
  - 26 Po Formation
  - 27 Ligpat Formation
  - 28 Intrusives
  - 29 Muth Formation
  - 30 Thajale Formation
  - 31 Karisa Formation
  - 32 Krol Formation
  - 33 Hamantia - The Formation
  - 34 Graphitic horizon of Hamantia
  - 35 Black Marji Congl. of Hamantia
  - 36 Unconform. Gondwanan sediments
- LOWER CRYSTALLINE NAPPE**
  - 32 Beaura Nappe (Mansari Nappe)
  - 33 Intrusives
- KISHITWAR AND LARJIKULLU-RAMUR WINDOWS, CHAIL NAPPES**
  - 34 Shal Formation
  - 35 Garsha and Barjok Formations
  - 36 Rampur basic volcanics
  - 37 Intrusives
  - 38 Rampur Formation (Berang Group)
- JALINSAR NAPPE**
  - 39 Jalinsar Nappe
  - 40 Jalinsar Thrust
- SIMLA-RUNKUN NAPPE ("OUTER FOLD BELT")**
  - 40 Tal Formation
  - 41 Krol carbonates
  - 42 Intra-Krol
  - 43 Dogra-Sima Slates and Blain Congl.
  - 44 Panjal Traps and Upper Paleozoic
- SUB-HIMALAYA**
  - 45 Alluvial plains, recent river terraces
  - 46 Upper Siwaliks
  - 47 Lower and Middle Siwaliks
  - 48 Upper Dharmasala (Mures)
  - 49 Subathu - Lower Dharmasala

- CT Chail Thrust
- DTFZ Duting-Thakote Normal Fault Zone
- IS Indus Suture
- JT Jaunsar Thrust
- MT Munisari Thrust
- MBT Main Boundary Thrust
- MCT Main Central Thrust
- PT Panjal Thrust
- SF Sangla Normal Fault
- SaF Sarchu Normal Fault
- ZSZ Zaskar Shear Zone
- Foliation Dip angle
  - 0 - 22°
  - 23 - 45°
  - 46 - 68°
  - 69 - 90°



# TECTONIC MAP OF THE NW HIMALAYA

by Albrecht Steck

