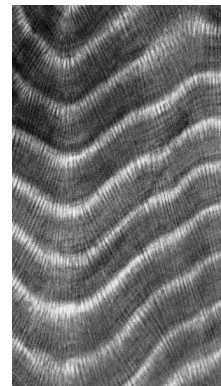
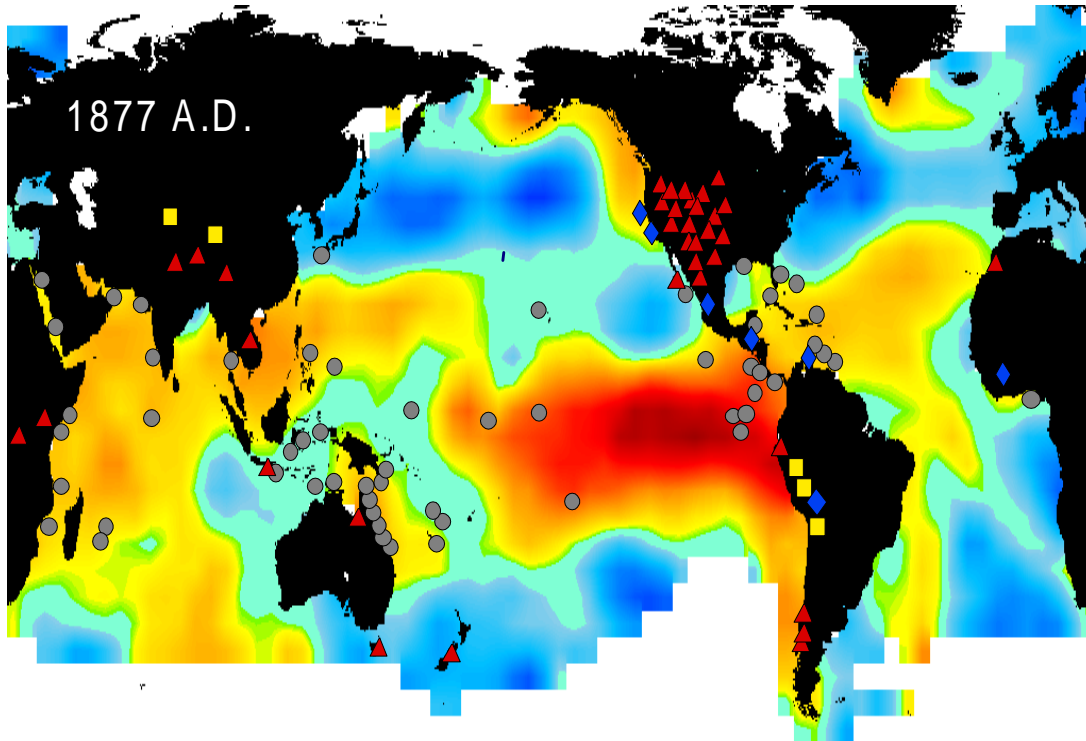


■ Ice Cores



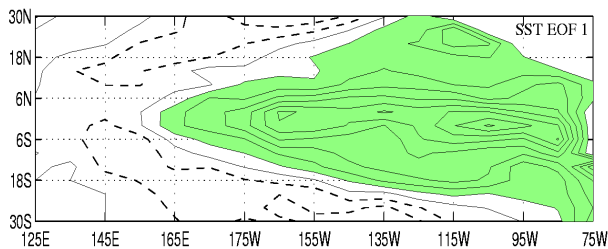
▲ Tree-rings



● Corals



◆ Varves



$$x(t+\tau) = \exp\left\{\int_t^{t+\tau} B(t'') dt''\right\} x(t) + \int_t^{t+\tau} \exp\left\{\int_{t'}^{t+\tau} B(t'') dt''\right\} \varepsilon(t') dt'$$