

# **Harnessing Energy and Water in The Salton Sea**

## **(Segment I)**

### **Architectural Plan for the Long-Term Solution for the Restoration of the Salton Sea**

**Nikola N. Lakic, Architect**

45-191 Elm Street, Indio, California 92201,

E-mail address, [nlakic@GeothermalWorldwide.com](mailto:nlakic@GeothermalWorldwide.com)

**Keywords:** Geothermal Power, Hydro Power, Electricity, Importing Seawater, In-Line-Pump, In-Line-Generator, Solar Power, Renewable Energy, Heat Exchanger, Desalinization, Potable Water, Extraction of Lithium, Clean Environment, Wildlife Sanctuary, Tourism, Fishery.

#### **ABSTRACT**

The Salton Sea in California is a terminal lake with reduced inflow from the Colorado River because of the water transfers related to the drought and the Quantification Settlement Agreement (QSA). The Lake is shrinking and exposing the receding shoreline (toxic playa) to the elements and facing oncoming environmental disasters.

The presented proposal is a long-term solution for the restoration of the Salton Sea. It includes an Architectural Plan that harmoniously incorporates several patented technologies into a self-sustaining organism. The presented proposal includes several options based on the same concept: **1)** Dividing the Lake into three sections; **2)** Importing seawater from the Ocean; **3)** Harnessing prevalent geothermal and solar energy.

Dividing the lake into three sections (Central and two smaller Northern and Southern sections), redirecting the New River and Alamo River back to Mexico, and exchanging it for importing seawater into the central section of the lake - would provide a condition for tourism (exclusive real-estate, beaches, resorts, hotels, etc.), and vast wildlife sanctuary. The presented proposal also implements several breakthrough technologies such as **a)** harnessing solar energy in combination with a pipeline system; **b)** harnessing prevalent geothermal energy which is accessible in the Salton Sea area by using a completely closed-loop heat exchange system for the generation of electricity, desalinization of the lake, and production of the potable water as a free by-product; **c)** Providing a concentrated salty brine as a free by-product which is a source for the extraction of lithium, and providing a safe depot for waste material after extraction of Lithium.

## **1. INTRODUCTION**

### **1.1 Overview of the Salton Sea situation:**

a) The Salton Sea in California is a terminal lake formed accidentally in 1905-1907 after the levy at the Colorado River was breached after a storm. Recently, the inflow from the Colorado River has been reduced as a result of the water transfers related to the Quantification Settlement Agreement (QSA). The Lake is shrinking and exposing the receding shoreline (playa) to the elements precipitating higher salinity levels and facing

oncoming environmental disasters, health issues of the nearby communities, as well as a serious threat to its multibillion-dollar tourist trade.

b) The lake is 35 miles long, and 15 miles wide, and is located south of Palm Springs in a basin - 220 feet below sea level.

c) The Earth's crust at the south end of the Salton Sea is relatively thin. The temperature in the Salton Sea Geothermal Field can reach 680 °F (360 °C) less than a mile below the surface. (See FIG. 1)

d) On the southern part of the Lake, there is a known geothermal reservoir.

e) The Salton Sea is California's largest lake and is presently over 50 % saltier than the Ocean. The Salton Sea is a "terminal lake," meaning that it has no outflow, so salts, nutrients, pesticides, and other contaminants are concentrated in the Lake. Water flows into the Lake from several limited sources, but the only way water leaves the Lake is by evaporation.

f) Geothermal energy in the Salton Sea area is prevalent and topography is unique - the lake is 220 feet below sea level and is located about 200 miles from the Ocean on both sides – the south of the Lake (San Felipe, Gulf of California) and the northwest of the Lake (Long Beach).

g) Under the terms of the Quantification Settlement Agreement (QSA) the Lake's decline is set to accelerate starting year, 2018. About the 1/3 of inflow of water from the canal will be diverted to San Diego and Coachella Valley.

h) Runoff water from nearby agricultural fields which contains fertilizers, pesticides, and other pollutants such as partially treated sewer from Mexicali contaminate the Salton Sea and make it an undesirable tourist destination, especially for beachgoers.

i) There have been many studies and complaints about the consequences for the nearby community if a solution for the Salton Sea is not found.

j) In several decades had been mentioned several proposals for the restoration of the Salton Sea proposed importing seawater, but they all failed to address: (i) salinity balance of the lake – proposing expensive processes such as reverse osmosis and distillers which require a substantial amount of electricity, maintenance of filters, etc.; (ii) not addressing continuation of pollution with pesticides and fertilizers from nearby farmland; (iii) practicality of the projects - proposing canals, tunnels, dozen pipelines - without addressing the practicality of its implementation - extreme cost with difficulties attracting investors for such projects that cannot generate revenue to pay-off initial investment, therefore rightfully deemed unfeasible.

## **1.2 Six Phases of the Proposal for the Restoration of the Salton Sea:**

Phase I - Connecting the Salton Sea with the Ocean with a pipeline 48" (5 pipelines on the uphill routes and 1 pipeline on downhill routes) for importing seawater into the central section of the Lake (Both two preferable options for pipeline corridors are recommended and provided here (See FIG. 2 and 9).

Phase II - Dividing the lake into three sections by building two main dikes (several-lane roads) strategically positioned - to follow certain contour (depth of the lake) - and the borders of nearby farmland. One in the northern and one in the southern part of the Salton Sea (See FIG. 4 - 8) to prevent contamination of the central part of the Lake with runoff waters from nearby farmland contaminated with fertilizers and pesticides, and to provide conditions for tourism and wildlife sanctuaries.

Phase III – Building irrigation pipeline system for farmlands located Southern and Northern of the Lake with control valves for controlling the inflow of the water into the South Lake and North Lake. Also, building several recreational parks with smaller lakes and fisheries.

Phase IV - Building one power plant using a completely closed-loop heat exchange system (SCI-GHE system) at one of the selected sectors.

Phase V - Building several more power plants using the (SCI-GHE) system - one in each additionally selected sector; and

Phase VI – A continuing build-up of many additional power plants using the (SCI-GHE) system at each selected sector.

Each of the Phases I-V could start and finish at about the same time providing a self-sustaining functional Lake in about 5-6 years.

### **1.3 The key elements of the presented proposal are:**

- 1) Dividing the lake into three sections (Central and two smaller Northern and Southern sections) and redirecting the New River and Alamo River back to Mexico – would stop pollution of the Lake. Importing seawater into the central section of the lake would provide a condition for tourism (exclusive real estate, beaches, resorts, hotels, etc.). It would also provide a wildlife sanctuary in the smaller North Lake and South Lake. The water for the North Lake and South Lake and nearby farmlands can be supplied from the Colorado River through the “All-American Canal” and “Coachella Canal”. We do not need to worry about the Central section of the Lake anymore (as currently, we do, because of limited inflow due to the Quantification Settlement Agreement) because now we can import seawater from the Ocean. NOTE: New River and Alamo River are contaminated with pesticides and fertilizers (runoff waters from nearby farmland) and with partially treated sewer from Mexicali, Mexico).
- 2) For Route #1 (Gulf of California, Mexico - Salton Sea, USA) - To negotiate a treaty through the “INTERNATIONAL BOUNDARY AND WATER COMMISSION” and their counterparts in Mexico about diverting the flow of the New River and Alamo River back to Mexico and in return getting corridor for a pipeline for importing seawater from the Gulf of California. The pipeline with maintenance roads can have several underpasses to preserve the integrity of Mexico’s territory. (Tips for negotiations with Mexico’s officials – in summary: It is in the interest of Mexico to have the flow of New River and Alamo Rivers. It is in the interest of the USA to have a corridor for importing seawater from the Gulf of California to save about \$100 million that would otherwise need to be paid for importing seawater (about 1 million acre-feet per year) from the Gulf of California.
- 3) For Route #2 (Long Beach – Whitewater - Salton Sea) – we do not need any treaty.
- 4) For importing seawater from the Ocean in the central section of the Lake – It is recommended to use the In-Line-Pump/Generator system which generates electricity in downhill routes and can be used as a supplement to the energy needed for horizontal and uphill routes.
- 5) Generation of electricity by using the pipelines as a foundation for solar panel assembly. Solar energy is prevalent in the area averaging 280 sunny days per year.
- 6) Implementing pipeline with sprinkler system for farmland (Northern and Southern areas of the Lake) to conserve limited source of water from the Colorado River, received through the “All-American Canal” and “Coachella Canal”, and to prevent the formation of runoff waters from nearby farmland. (See FIG. 4, 5, and 8); That pipeline system (about 870 miles) can also be used as a foundation for solar panels for the generation of additional electricity and increasing revenue by several hundred million dollars per year.
- 7) By redirecting the New River and Alamo River back to Mexico and implementing pipelines with sprinkler systems for farmland (Northern and Southern areas of the Lake), to be used only as needed – would not be runoff waters anymore - it would stop pollution of the Lake. Using water from the “All-American Canal” and “Coachella Canal” and sprinkler system for irrigation of nearby farmland would provide the conditions for building several recreational parks with small circulating Lakes and fish farms with substantial financial benefits (See FIG. 12). The essence of this point is that water from canals, before entering the irrigation system, can be used for the formation of recreational parks with smaller circulating Lakes (not ponds) and fisheries (See FIG. 4 and 12).

- 8) Generation of electricity by harnessing prevalent geothermal sources with new technology using a completely closed-loop system that is not limited to a geothermal reservoir.
- 9) Desalinization of the lake by using gravity - pumping out higher salinity water - which tends to accumulate at the bottom of the lake (as higher density water) - and pumping it into the boilers of new Power Plants for generation of electricity and production of potable water as a free by-product.
- 10) Providing a concentrated salty brine after the generation of electricity which is a free by-product, and which is also a source for the extraction of lithium. (See FIG. 13-15); and providing a safe depot for waste material after extraction of Lithium. (See FIG. 5).
- 11) Providing vast wildlife sanctuary (See FIG. 4, 5, 7, and 8); and
- 12) Providing conditions for tourism - exclusive real estate, beaches, resorts, hotels, etc. The surfing waves facility will be a tourist attraction the whole year round (See FIG. 8, 10-11).

### **1.4 Preliminary Estimate for Water Needed for Balancing Evaporation in the Salton Sea.**

The necessary inflow of water to balance the evaporation of the whole lake is about 1,200,000 acre-feet per year. The surface of the southern section of the Lake is about 10% of the whole Lake (See FIG. 4 and 5). Water needed to balance evaporation of the southern section of the Lake is about 120,000 acre-feet per year. Water needed for farmlands south of the lake is about 200,000 acre-feet per year. Water needed for balancing evaporation in the southern section of the Lake and for nearby farmland adds up to about 320,000 acre-feet per year.

The surface of the northern section of the Lake is about 5% of the whole Lake (See FIG. 4 and 8). Water needed to balance evaporation of the northern section of the Lake is about 60,000 acre-feet per year. Water needed for farmlands north of the lake is about 100,000 acre-feet per year.

Water needed for balancing evaporation in the Northern section of the Lake and for nearby farmland adds up to about 160,000 acre-feet per year.

Water needed for balancing evaporation in the Northern and Southern sections of the Lake and for nearby farmlands adds up to about 480,000 acre-feet per year.

It means that a functional Lake can be achieved with less than 500,000 acre-feet per year from the Colorado River through the All-American Canal and Coachella Canal, which means that this proposal is in harmony with restrictions from the Quantification Settlement Agreement (QSA) which allows about 750,000 acre-feet per year.

## **3. SUMMARY**

### **3.1 Importing Seawater and Harnessing Hydropower**

**Phase II** - Dividing the Lake into three sections by building two main dikes (4-lane roads) strategically positioned - One in the northern and one in the southern part of the Salton Sea. The rough cost estimate is around **\$3.0 Billion**. (22 miles + 13 miles) x \$82 Million = \$2.87 Billion). The cost estimate for 6 piers is about \$130 million (6 piers x \$20 Million = \$120 Million).

#### **Route #1**

Pipeline cost estimate: \$1,425,600,000.

Added about 20% for a new Product Development; Permits, Preliminary and Final design; Several Pumping stations; Several freeway Underpasses; Right-Of-Way permits; DELTA hydroelectric power plant.

$\$1,425,600,000 + (20\% = \$285,120,000) = \$1,700,000,000.$

⇒ Pipeline cost I estimate **\$1.7 Billion.**

The volume of water imported: **1,114,261** acre-feet per year.

Kinetic Energy generated: **27.3 MWh.**

Revenue generated: \$14,348,880 per year.

Maintenance Expenses: **-\$2,000,000.**

⇒ Revenue generated: **\$12,348,880.**

## Route #2

Pipeline cost estimate:

$\$2,138,400,000 + (20\% = \$427,680,000) = \$2,566,080,000.$

Purchase of Right-of-Way: \$500,000,000.

⇒ Pipeline Cost Estimate: **\$3,066,5080,000.**

The volume of water imported: **2,267,464** acre-feet per year.

Maintenance Expenses: **-\$2,000,000.**

The Hydro energy generated: 710.5 MWh

Efficiency factor is used 20%  $\Rightarrow 710.5 \text{ MWh} \times 1.2 = 852.6 \text{ MWh}.$

Energy Net for Route # 2:  $719.0 \text{ MWh} - 852.6 \text{ MWh} = \textbf{-142.1 MWh}.$

142.1 MWh will be transferred from the solar-generated energy (See Segment (III)).

⇒ The Hydro energy generated: Deficit **-142.1 MWh.**

## **The Cost Estimate for Pipeline System for the Irrigation of the Farmland Southern Area of the Salton Sea:**

Length of pipeline system: **870 Miles.**

The cost estimate to build it: **\$2.7 Billion.**

Energy Generated: **2.73 MWh.**

Revenue generated: **\$1,434,888 per year.**

Maintenance: **\$2,000,000.**

Revenue generated: **\$1,434,888 per year.**

## **Cost Estimate for Pipeline System for the Irrigation of the Farmland Northern Area of the Salton Sea:**

The farmland in the Northern area of the Salton Sea is approximately 50% of the farmland Southern Area of the Salton Sea. Here values are divided by 2. This area does not have enough drop to generate hydropower.

Length of pipeline system: **435 Miles.**

The cost estimate to build the pipeline system: **\$1,378,080,000.**

Maintenance: **\$1,000,000.**

### **3.2 Harnessing Solar Energy**

The Cost of the TOS system for Route #1 (160 miles): **~ \$200,000,000.**

Maintenance of the TOS on Route #1: **-\$2,500,000.**

The Cost of the TOS system for Route #2 (200 miles): **~ \$250,000,000.**

Maintenance of the TOS on Route #2: **-\$3,500,000.**

The Cost of the TOS system South of Salton Sea (870 miles): **~ \$1,200,000,000.**

Maintenance of the TOS system South of Salton Sea (870 miles): **\$12.400,000.**

The Cost of the TOS system for the North of the Salton Sea (430 miles): **~ \$580,000,000.**

Maintenance of the TOS system the North of the Salton Sea (430 miles): **\$6,200,000.**

⇒ **\$2,254,600,000**

Energy Generated with TOS on Route #1: **423,52 MWh.**

Energy Generated with TOS on Route #2: **529.4 MWh.**

Energy Generated with TOS on the Southern of Salton Sea (870 miles): **2,302.29 MWh.**

Energy Generated with TOS on the Northern of Salton Sea (430 miles): **1,151.14 MWh.**

⇒ **4,406.35 MWh.**

Revenue Generated TOS system for Route #1 (160 miles): **\$45,740,160 per year.**

Revenue Generated TOS system for Route #2 (200 miles): **\$57,175,200**

Revenue from the TOS in the area South of the Salton Sea (870 miles): **\$248,647,320 per year.**

Revenue from the TOS in the area North of the Salton Sea (430 miles): **\$124,323,660 per year.**

⇒ **\$475,886,340**

NOTE: Here are not calculated solar panels and dishes that can be set up on service roads near the pipelines and electric power lines, but that would double or triple the revenue of the area.

### **3.3 Harnessing Geothermal Energy**

The Cost of One Geothermal Power Plant: **\$418,000,000.**

The Cost of 3 Power Plants: **\$1,254,000,000.**

(Estimate of the Production Capacity of one (1) Geothermal Power Plant is about: **100 MW**).

The estimate of the Production Capacity of three (3) Geothermal Power plants is about: **300 MW**.

(Preliminary Estimate for Revenue of one (1) Geothermal Power Plant is about: **\$50,457,600** per year).

The preliminary estimate for Revenue of three (3) Geothermal Power Plants is about: **\$151,372,800** per year.

### **3.4 Harnessing Lithium**

#### **Salton Sea Facts:**

Surface: 350 square miles (910 km<sup>2</sup>).

Inflow: < 1,200,000 acre-feet (1.5km<sup>3</sup>).

Depth: 43 feet (13 m).

Volume: 6,000,000 acre-feet (7.4 km<sup>3</sup>).

Salinity: 56 grams per liter.

[Pacific Ocean is: 35 gm /L].

Salt concentration has been increasing per year 3%.

About 4,000,000 Tons of salt are deposited in the Valley (Salton Sea) each year with irrigation water.

1,000,000 acre-feet = 1,233,481,837.54 Kiloliters (Kl).

1,233,481,837.54 Kiloliters (Kl) = 1,213,746,128 Tons.

1,213,746,128 Tons ÷ 5,000,000 = 242.75 Tons of Lithium.

Import of 1,000,000 acre-feet of seawater from Route #1 (Gulf of California - San Felipe) brings about **242.75 Tons of Lithium per year.**

Import of 2,000,000 acre-feet of seawater from Route # 2 (Pacific Ocean - Long Beach brings about **485 Tons of Lithium per year.**

Import of 242.75 Tons of Lithium from Route #1 (+) 485 Tons of Lithium from Route #2 - it sums up to **727.75 Tons** of Lithium per year.

Since the water of the Salton Sea is about 50% saltier than the water from the Ocean it is realistic to expect that about **1000 Tons of Lithium per year** can be extracted from the Salton Sea.

Estimate for Extraction of Lithium from the water of the Salton Sea: **\$13,000,000** per year as of 2021.

### **3.5 Recreational Parks**

By using water from the “All-American Canal” and “Coachella Canal” and sprinkler system for irrigation of nearby farmland it would provide conditions for establishing several recreational parks with small circulating Lakes and fish farms with substantial financial benefits. The rough Cost Estimate for 6 Recreational Parks and 6 fish farms is about **\$12 million**. (6 parks x \$1 million = \$6 million) + (6 fish farms x \$1 million = \$6 million).

The Recreational Parks should be funded by the State. The fish farms should be for the private sector (investors) to participate in.

### 3.6 Surfing Waves Facility

This proposal provides conditions for tourism - exclusive real estate, beaches, resorts, hotels, etc. The surfing waves facility will be a tourist attraction the whole year round. The rough Cost Estimate for the Surfing Waves Facility is about **\$15 million**. (See FIG. 8, 10-11). It should be part of the hotel system nearby. Importing seawater provides the conditions for tourism and the private sector (investors) to participate.

### 3.7 Closed-loop Heat Exchange System

An essential element of the presented proposal is the introduction of a “Closed-loop Heat Exchange System” for harnessing geothermal energy and solar energy, both prevalent in the area. The presented and patented, concept demonstrates how the uniqueness of the location with prevalent geothermal sources and the existence of the nearby Coachella Canal can be combined and utilized in a solution for harnessing geothermal energy with a cooling system that does not spend (lose) desperately needed water. The presented system is superior to conventional cooling systems, especially in cases where a deficiency of water is an issue. (See FIG. 13, 14, 15, 17, 18, 19, 20).

The presented and patented, concept demonstrates how the uniqueness of the location with prevalent geothermal sources and the existence of the nearby Coachella Canal can be combined and utilized in a solution for harnessing geothermal energy with a cooling system that does not spend (lose) desperately needed water.

The closed-loop cooling system cools the condensers of the presented geothermal power plants.

There is an additional binary power unit primarily for the extraction of heat from the outflow line exiting condensers.

The first heat exchanger is located deep into the wellbore transferring heat from the heat source to the second heat exchanger which is coupled into the boiler. To maximize the extraction of heat, additional binary power units with working fluids with different boiling points are coupled. This system extracts more heat, generates more power, and therefore generates more revenue.

The boiler is filled with brine from the bottom of the Lake.

Produced steam enters the power unit with pistons (optional turbines) and generates electricity. This system greatly reduces or eliminates ‘back pressure’ which contributes to generating more power and therefore more revenue.

The exhaust steam is condensed (cooled) in the condensers with a closed-loop cooling system using water from the nearby Coachella Canal.

Concentrated brine from the main boiler is frequently discharged and used for the extraction of lithium.

One part of the closed-loop cooling system (heat exchanger) is positioned at the bottom of the nearby Coachella Canal. Optionally, water from the Coachella Canal can be used directly for cooling condensers and returned the same amount to the canal.



### 3.8 Summary of the Summary of the proposal for the Restoration of the Salton Sea:

The Cost Estimate is about **\$15,395,040,000**.

The Revenue Estimate is about **\$542,255,148 per year**.

The architectural plan successfully restores and refills the Salton Sea to the level of the 1950s and the '60s and reestablishes huge wildlife sanctuaries despite the reduced inflow of water from the Colorado River.

By redirecting the New River and Alamo River back to Mexico before it gets polluted with fertilizers and pesticides, it provides an option for filling up the Laguna Salada – a dry Lake in Mexico - and reestablishes flaws in the Gulf of California (Sea of Cortez). Everyone should love that. In return, through negotiation by the 'International Boundary and Water Commission' (IBWC) and their counterparts in Mexico, through a treaty to negotiate a corridor with a service road for a pipeline for importing seawater into the central section of the Salton Sea. Since such a solution is of great interest to us (USA) and to Mexico, the negotiation should not be a difficult task. We could exchange at least the same amount of water, although, through negotiation, we could have an opportunity to get 1,000,000 acre-feet of seawater and to keep a certain amount from the Colorado River. Also, it would be an opportunity to negotiate a 100-year deal with an option to renew the deal after 100 years. This solution would save the USA around \$100,000,000 per year that otherwise would need to be paid for importing 1,000,000 acre-feet of seawater.

The presented technology for the desalinization of salty water using geothermal and/or solar energy would improve our leverage in negotiation with Mexico officials because by using the presented methodology, Mexico can provide potable water for the nearby city of Mexicali which desperately needs potable water and concentrated brine that can be used to produce lithium. Both elements are in demand. The same system is proposed for the Salton Sea area.

Also, an essential part of the presented proposal is that dividing the Salton Sea into three sections would need water from the Colorado River only for farmlands and for balancing the evaporation of the North Lake and South Lake. That is in harmony with the reduced inflow of water from the Colorado River as required by the Quantification Settlement Agreement (QSA) and possible additional reductions in the future because of drought.

Also, it is important to mention, that an essential factor of the presented proposal is utilizing a dike around the desired area allocated for the extraction of lithium to provide dry land and prevent the destruction of the Salton Sea as would be the case with the 'current course of action'.

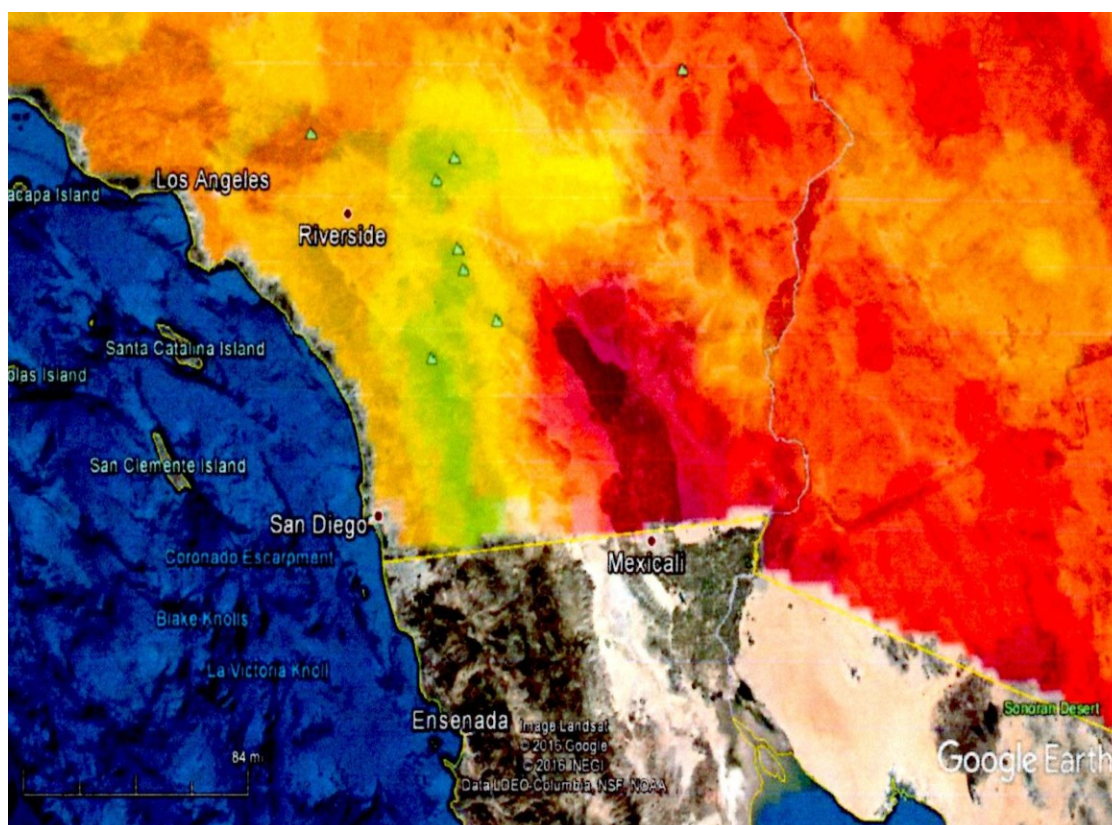
Also, it is important to mention that the implementation of the presented proposal for the restoration of the Salton Sea would cost only about \$15,000,000,000. It can be completed in about 5-6 years and would generate at least \$500,000,000 in revenue per year - out of the blue – literally. The revenue rough estimate is very conservative. A more realistic revenue estimate would be about \$1,000,000,000 per year. That is in addition to achieving a clean environment, a substantial amount of potable water, lithium, conditions for tourism, and other activities that generate revenue.

The essence of the presented patented concept for the restoration of the Salton Sea is that it provides conditions for saving the Salton Sea and restoring it to its glory of the 1950s and 60s and more.

The presented preliminary Cost Estimate is based on standard available information. The final production design, based on the presented preliminary design, and final cost estimate will be available after cooperation

with selected capable contractors – preferably selected by the State. Slight variations in the cost estimate might occur.

#### **4. ILLUSTRATIONS**

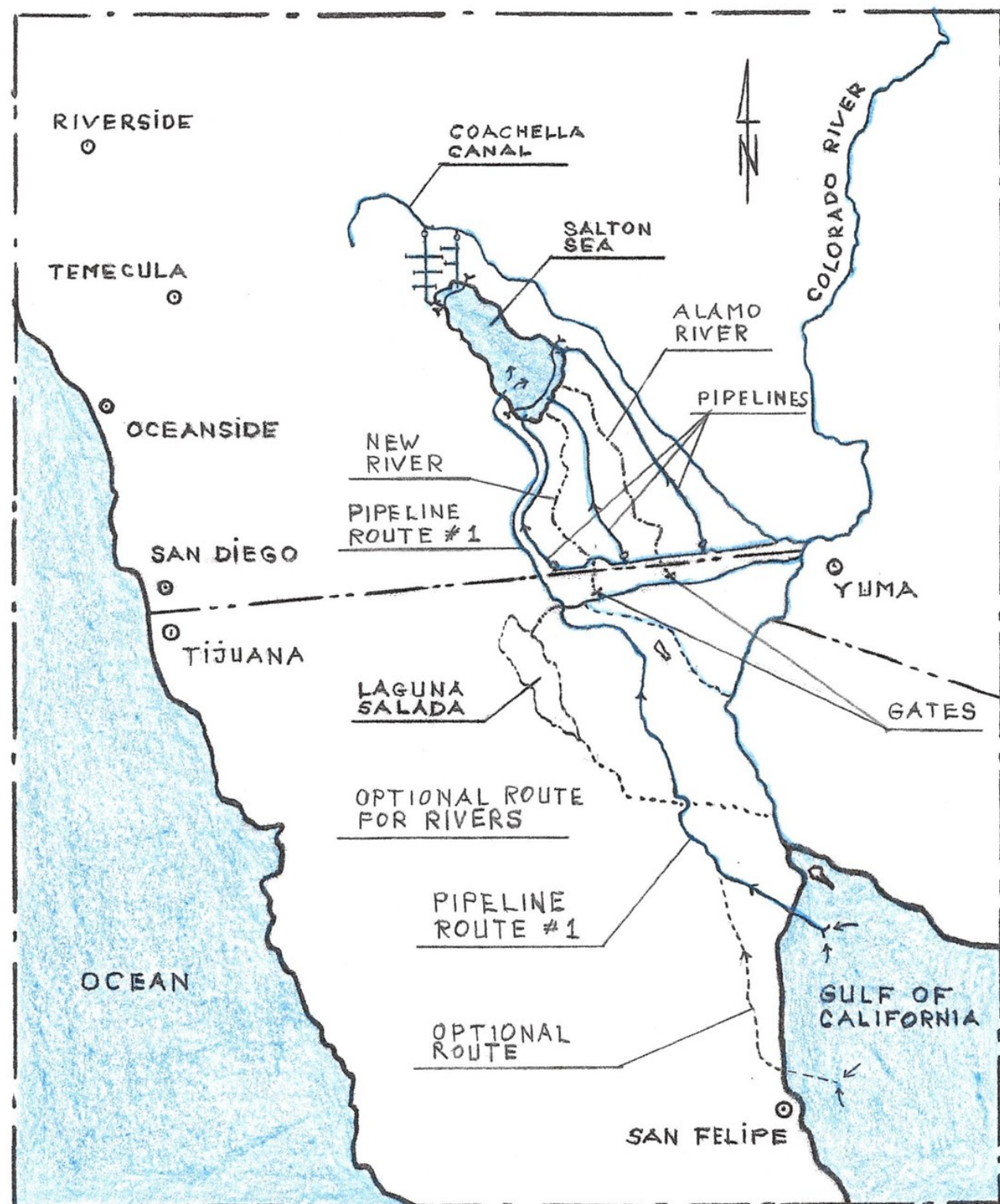


**Figure 1:** Map of Southern California – Temperatures at the dept of 3.5 Km

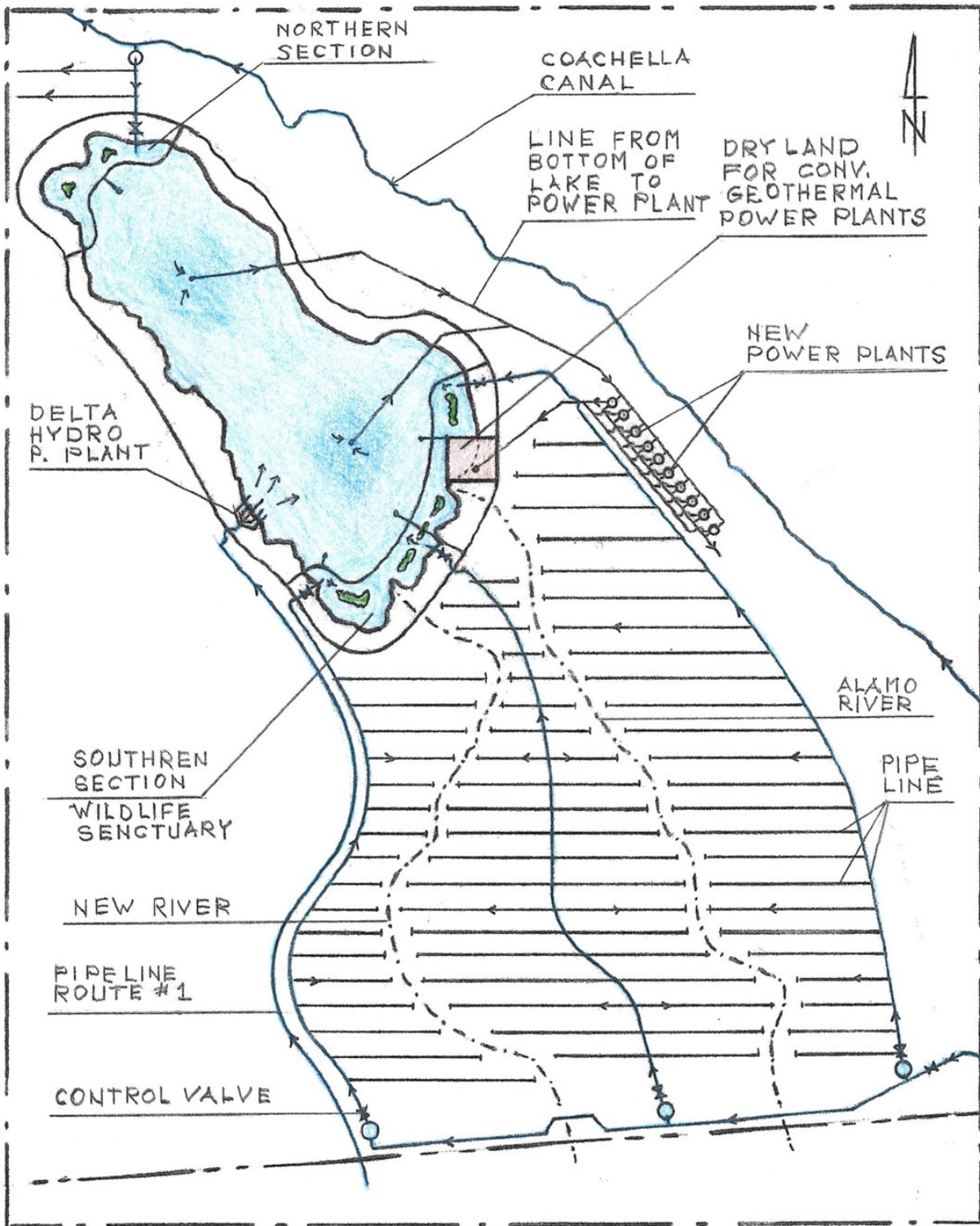


**Figure 2:** Map of the Route #1



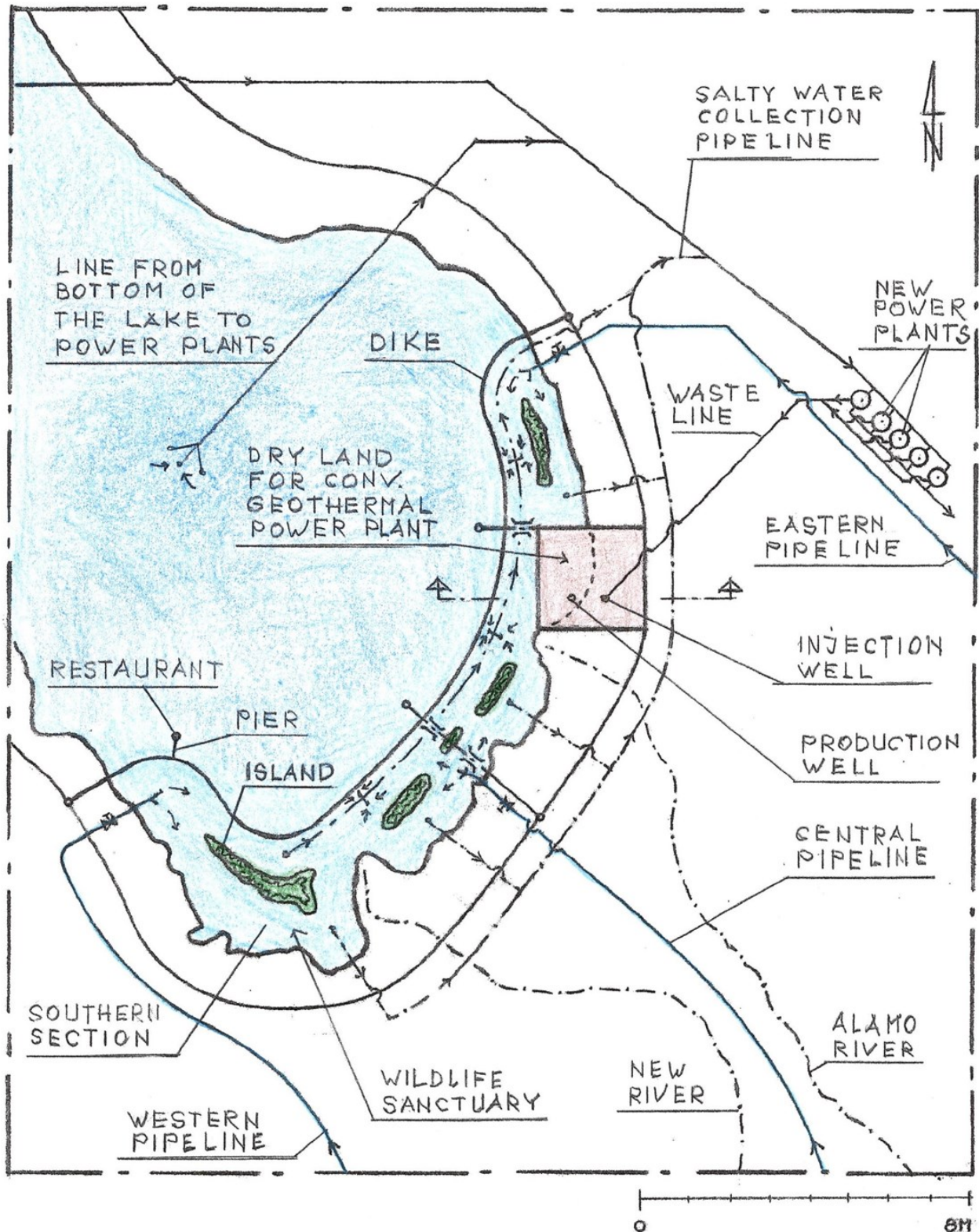


**Figure 3:** Map of redirecting New and Alamo Rivers

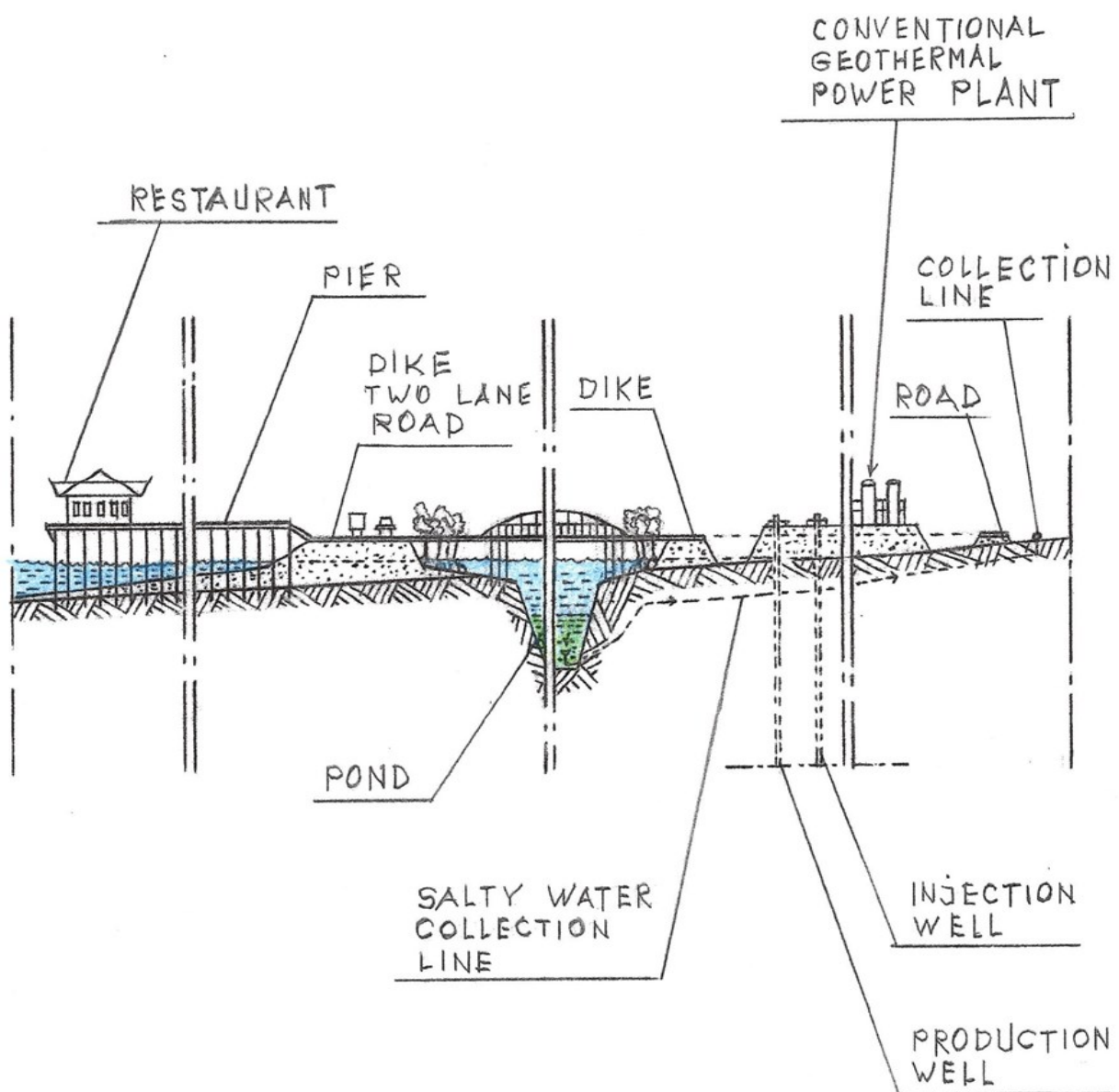


**Figure 4:** Map of the divided Lake into three Sections and Irrigation System - South of the Lake”.



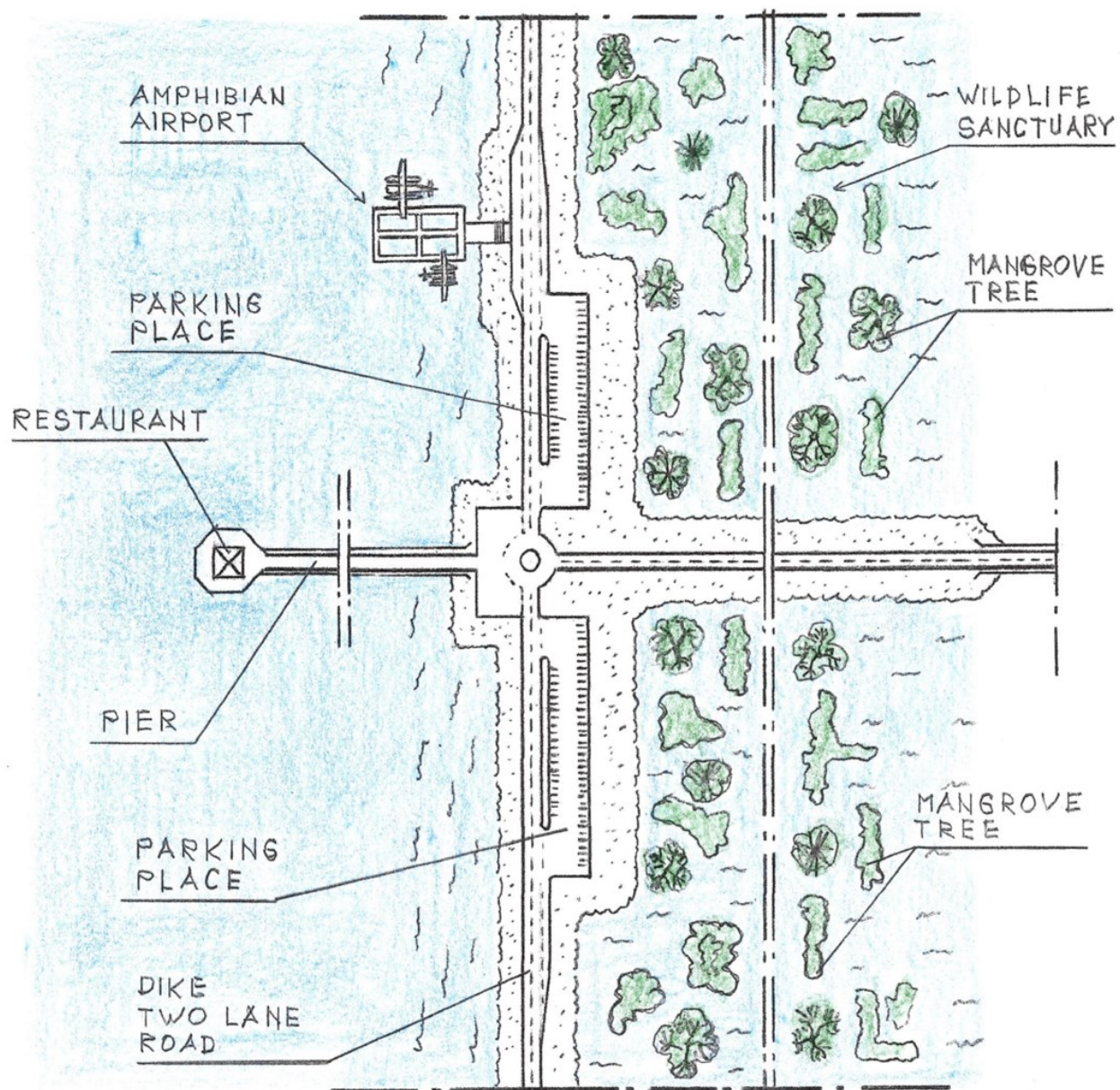


**Figure 5:** Enlarged Southern Part of the Salton Sea – Wildlife Sanctuary



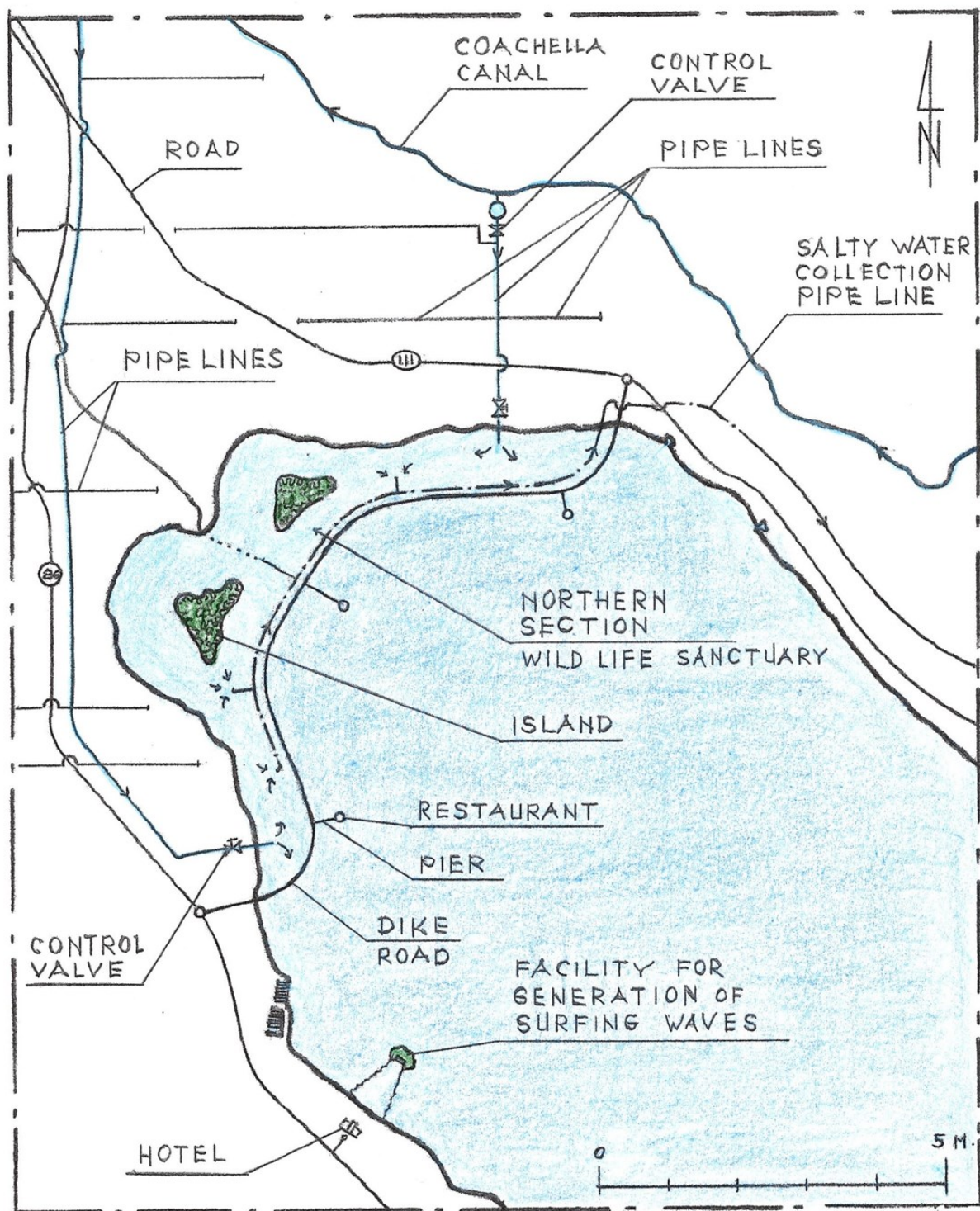
**Figure 6:** A cross-sectional view was taken near a typical dike-pier intersection.





**Figure 7:** Plain view of a typical dike-pier intersection.



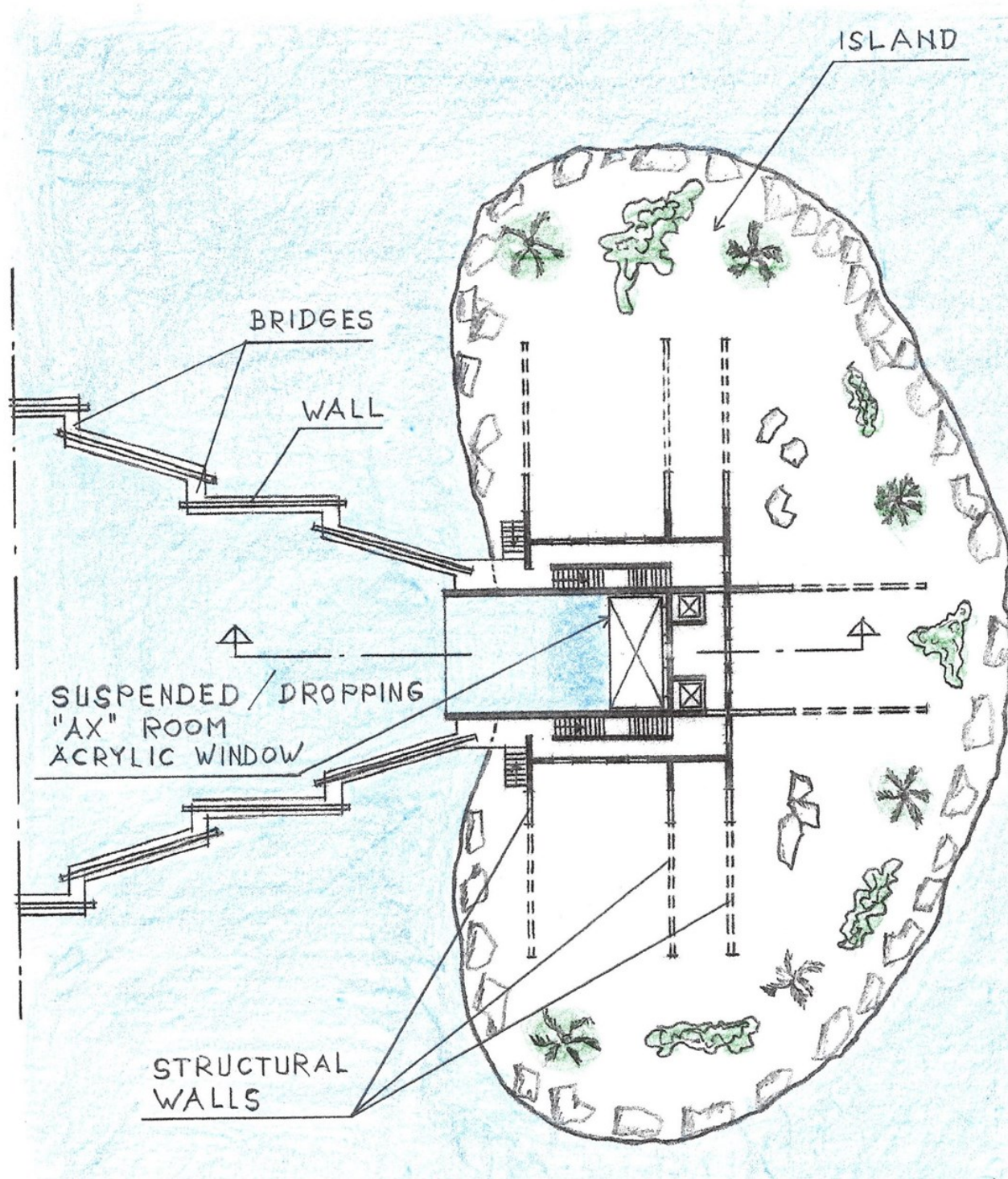


**Figure 8:** The enlarged northern part of the Salton Sea

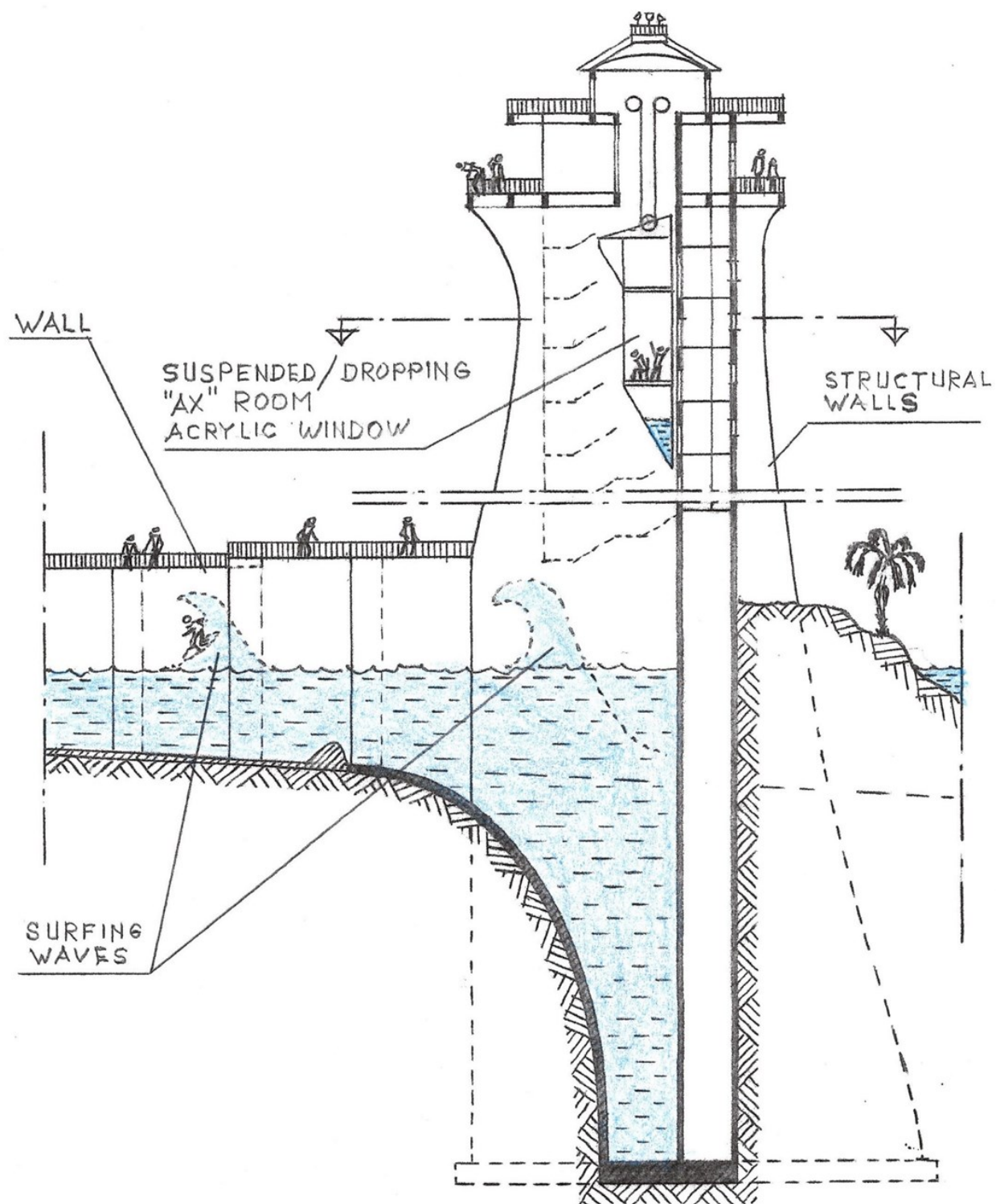


**Figure 9:** Map of the Route #2



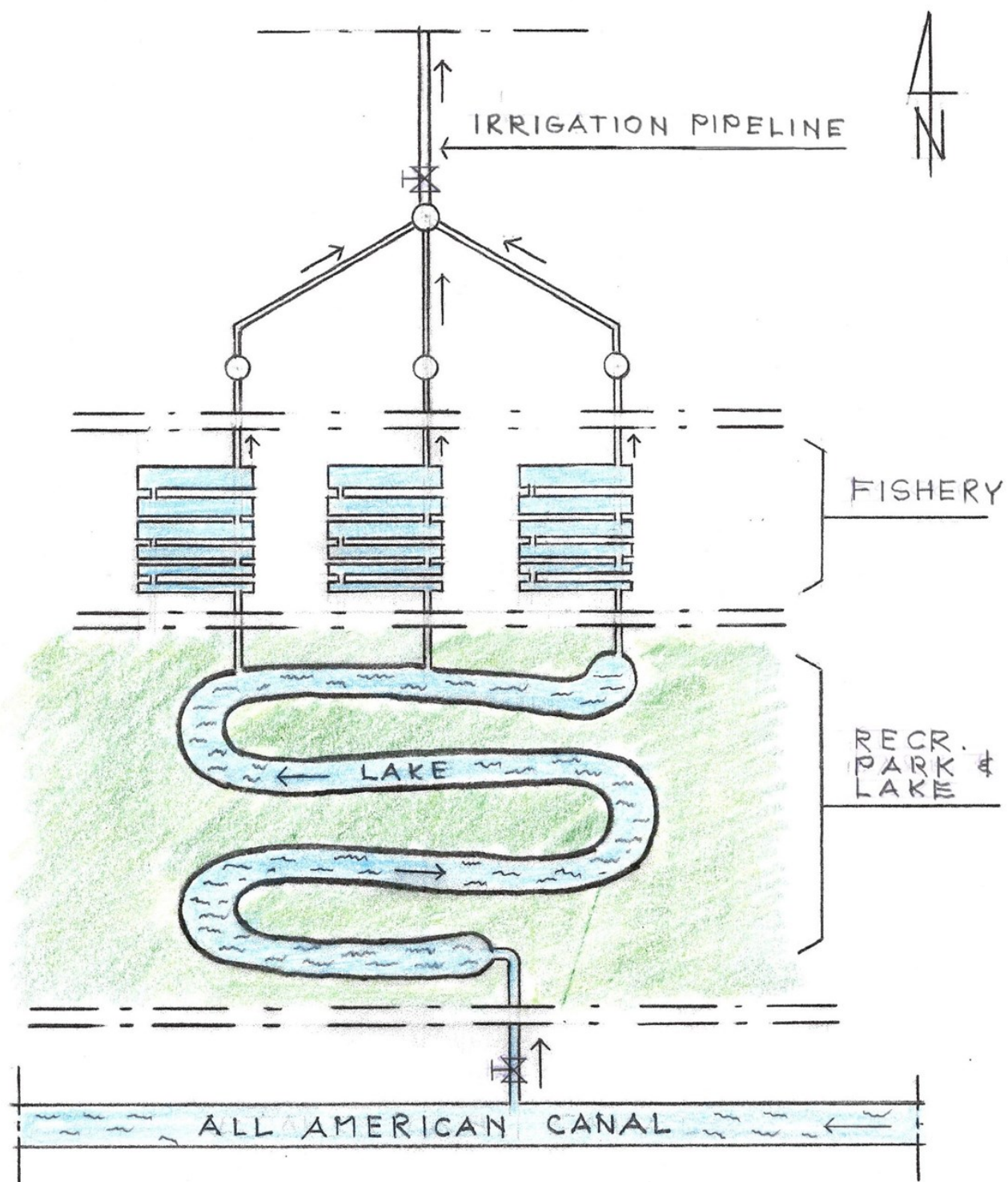


**Figure 10:** Plain cross-sectional view of a wave generation facility

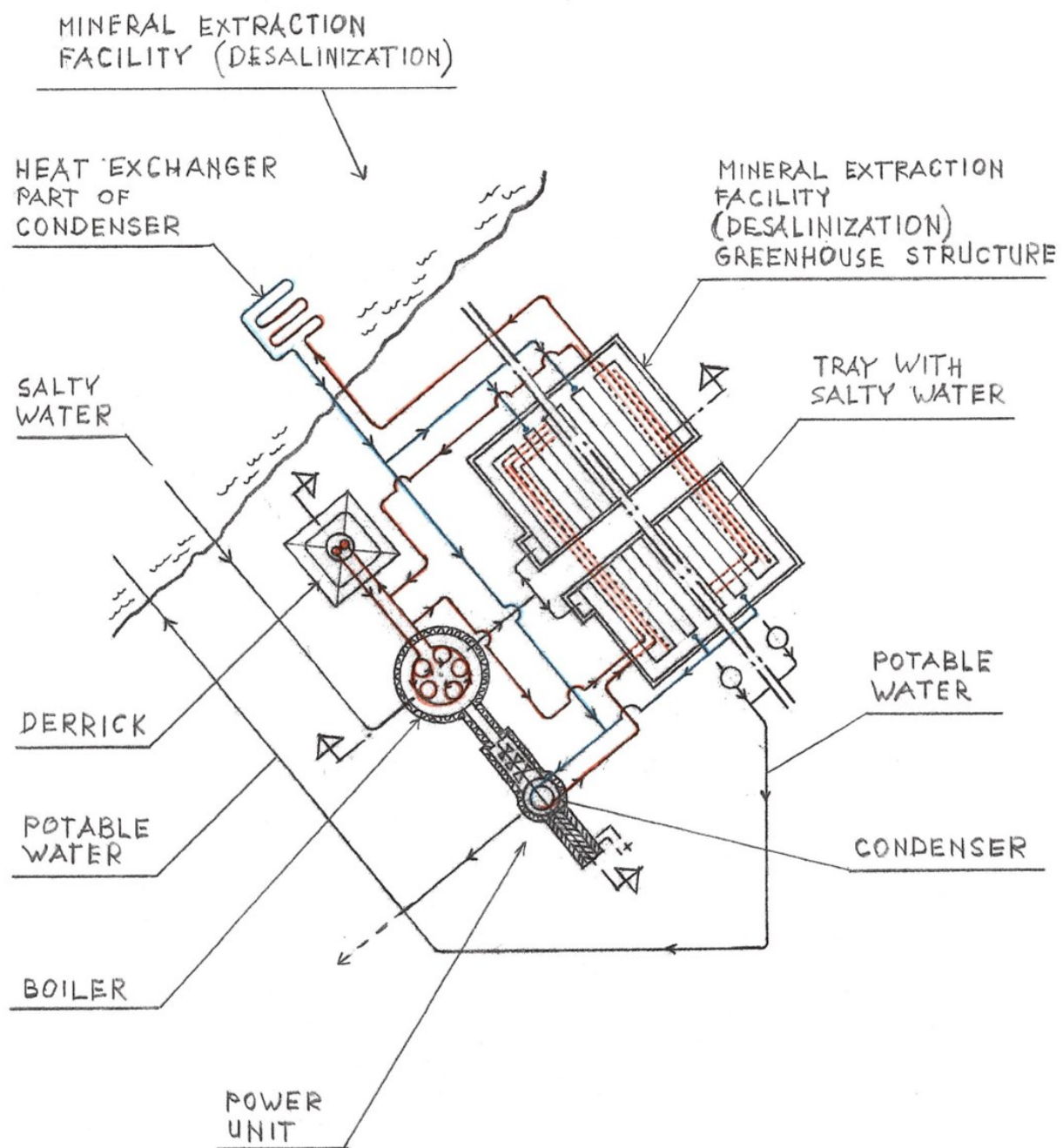


**Figure 11:** Plain cross-sectional view of a wave generation facility

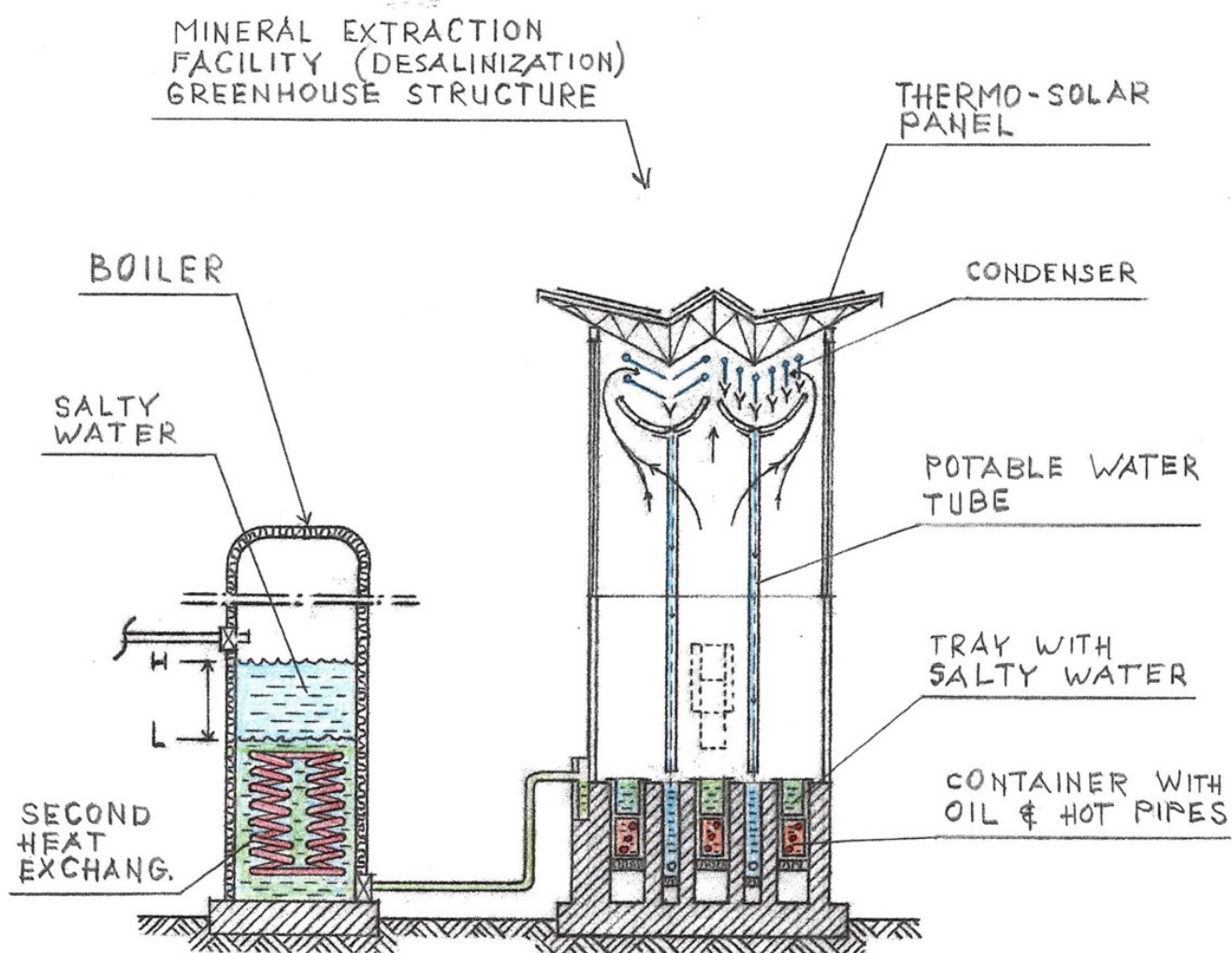




**Figure 12:** Schematic Plain View of a Recreation Park with a Lake and Fishery

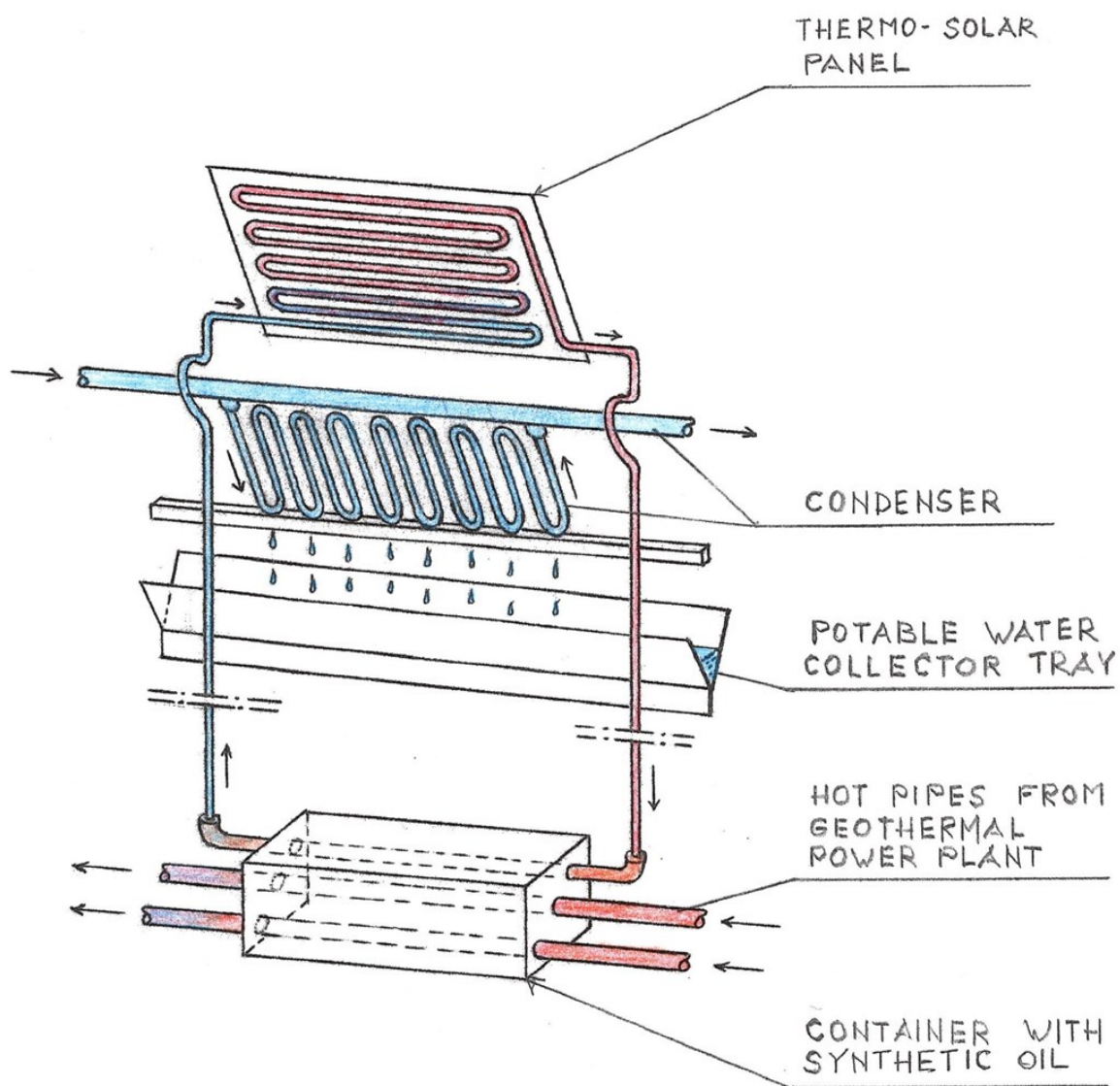


**Figure 13:** Schematic Plain View of a Power Plant for Desalination of the Salton Sea, Production of Electricity, Potable Water, and Lithium

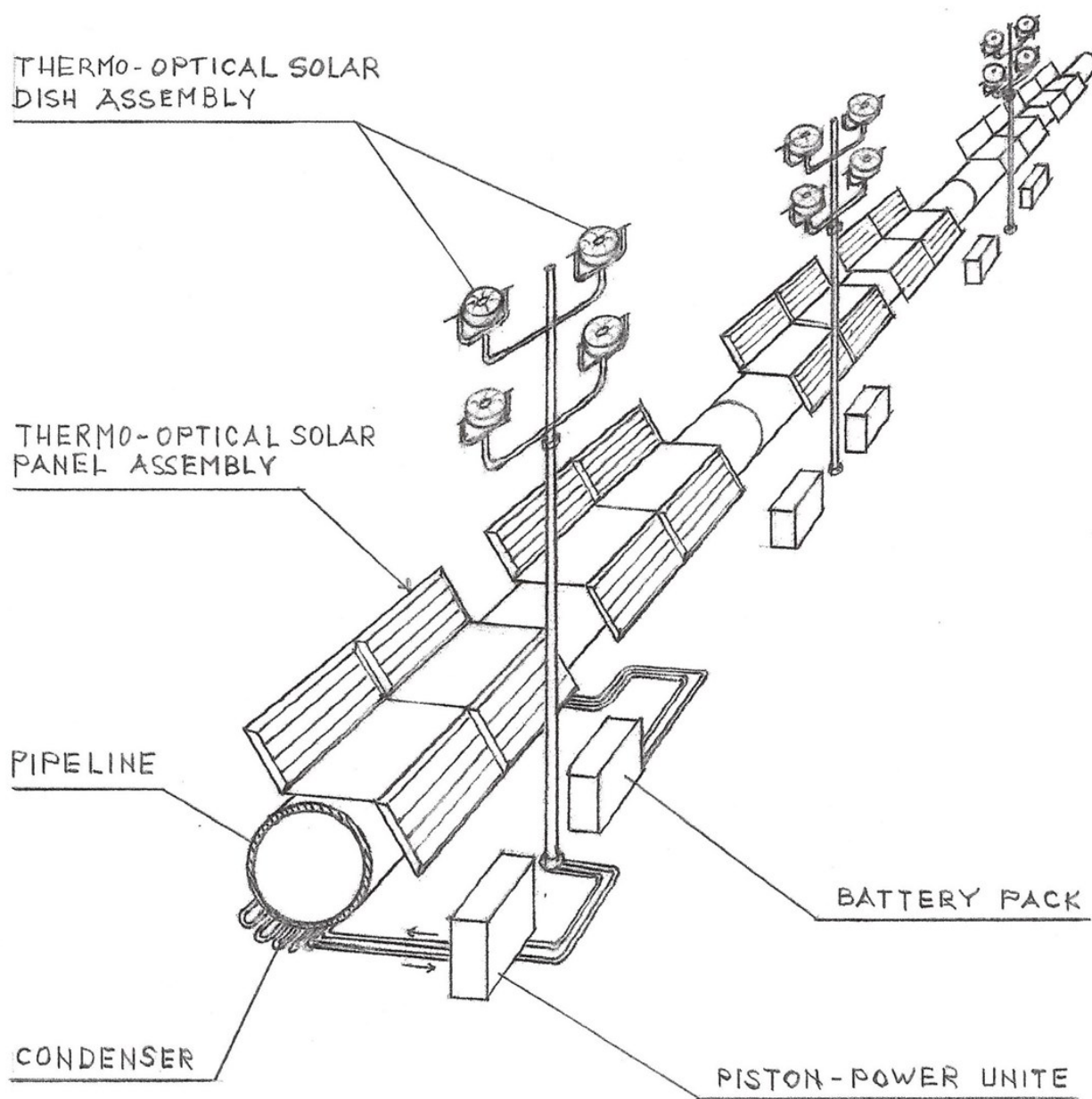


**Figure 14:** Schematic Cross-sectional View of a Power Plant for Desalinization of the Salton Sea, Production of Electricity, Potable Water, and Lithium

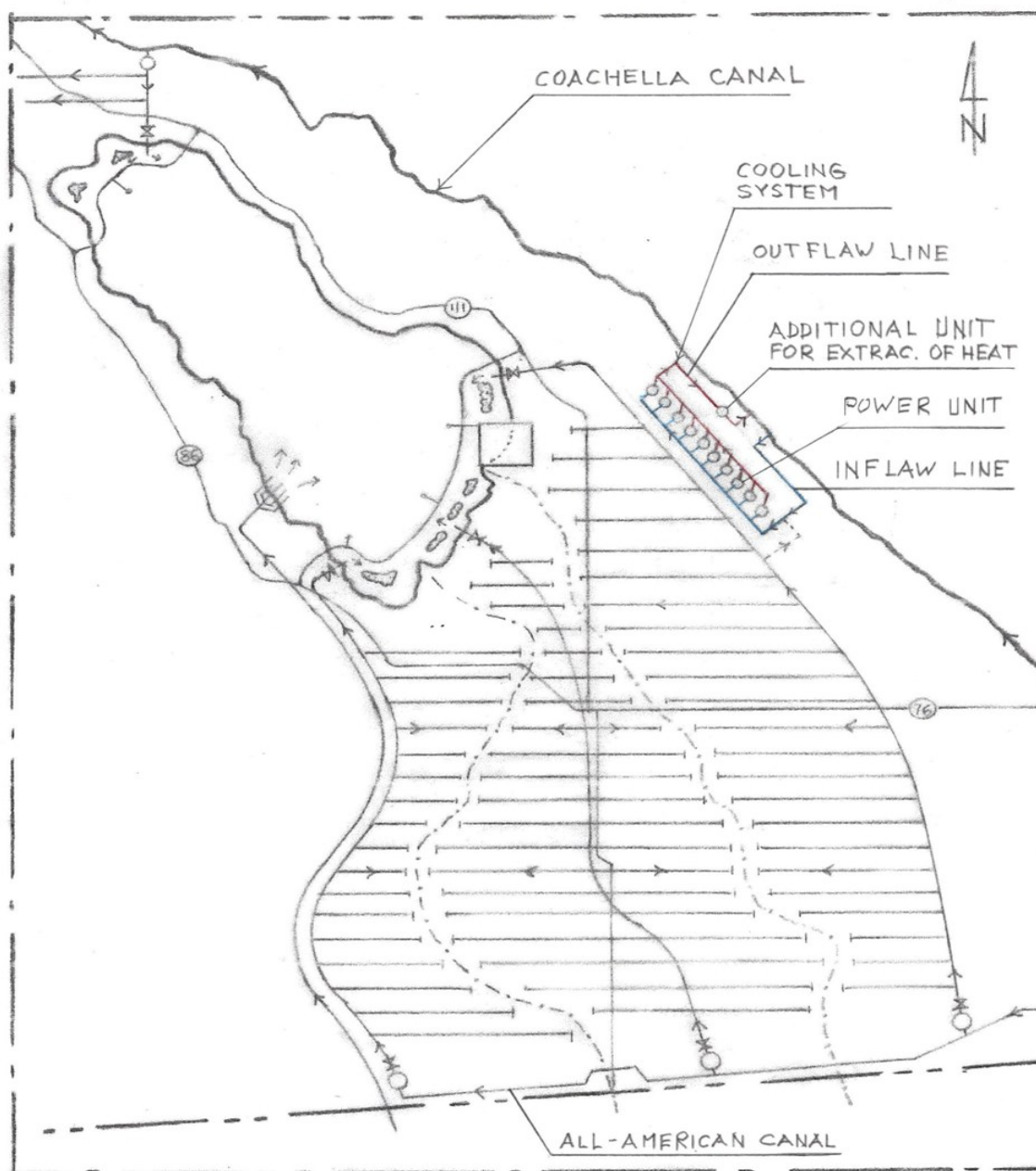




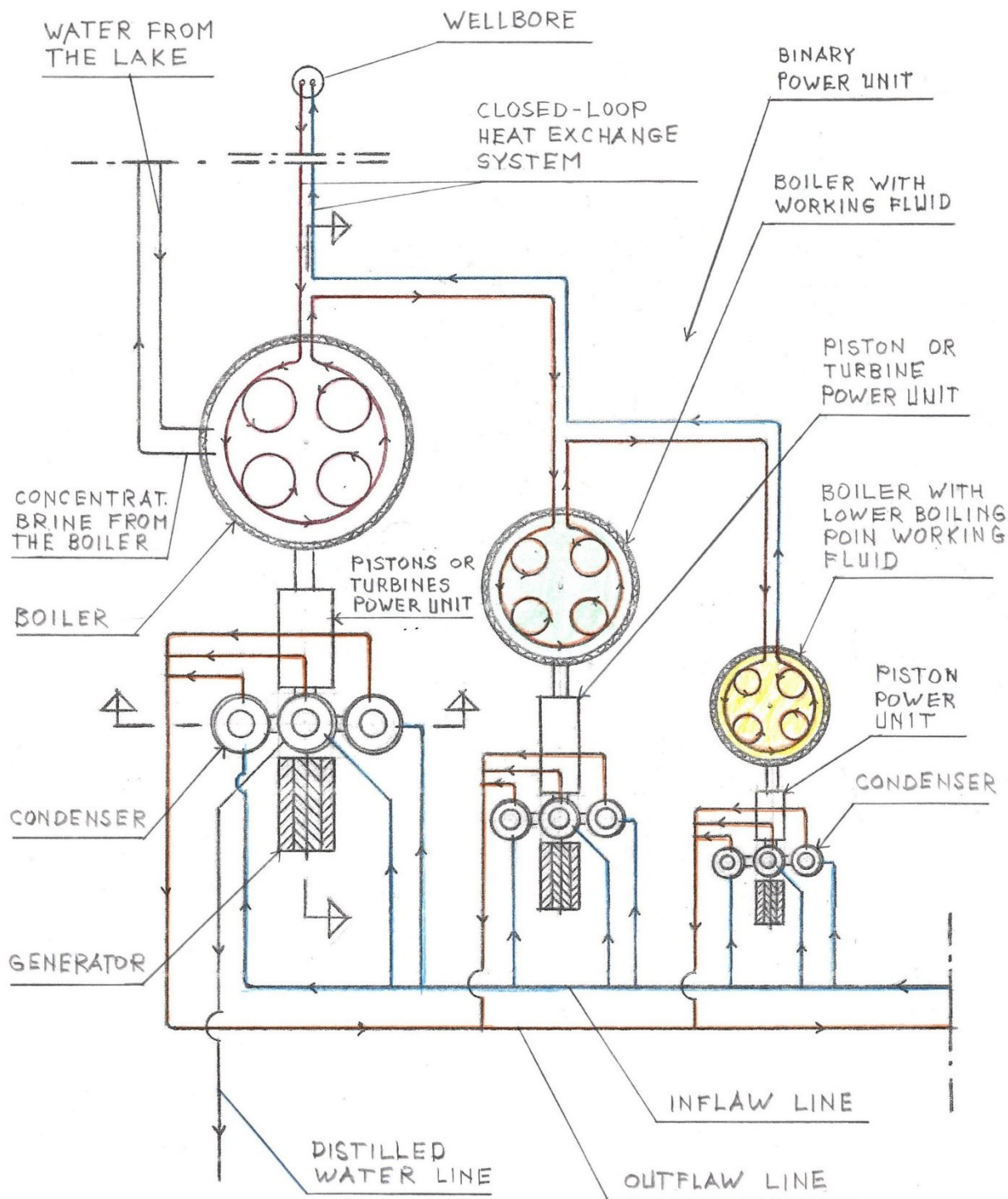
**Figure 15:** Perspective Cross-sectional View of an alternative Thermo-Solar System used in Desalinization Plant



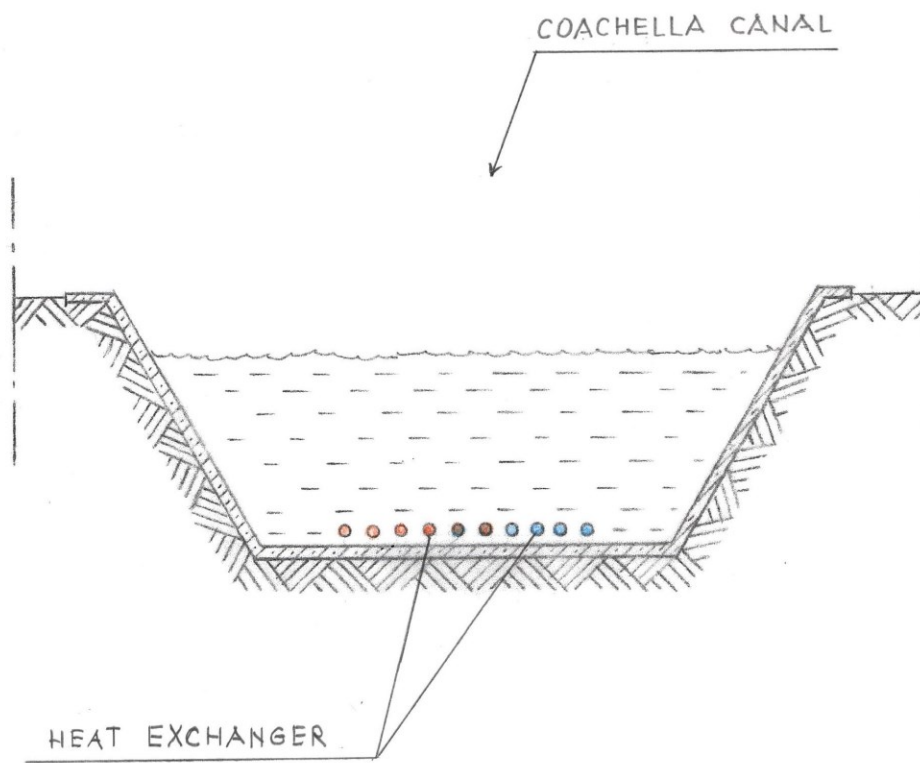
**Figure 16:** Perspective View of a Pipeline with Solar Panels attached to the Pipeline in combination with an alternative Solar Dish System aside.



**Figure 17:** Plain view of a Closed-Loop cooling system for geothermal plants.

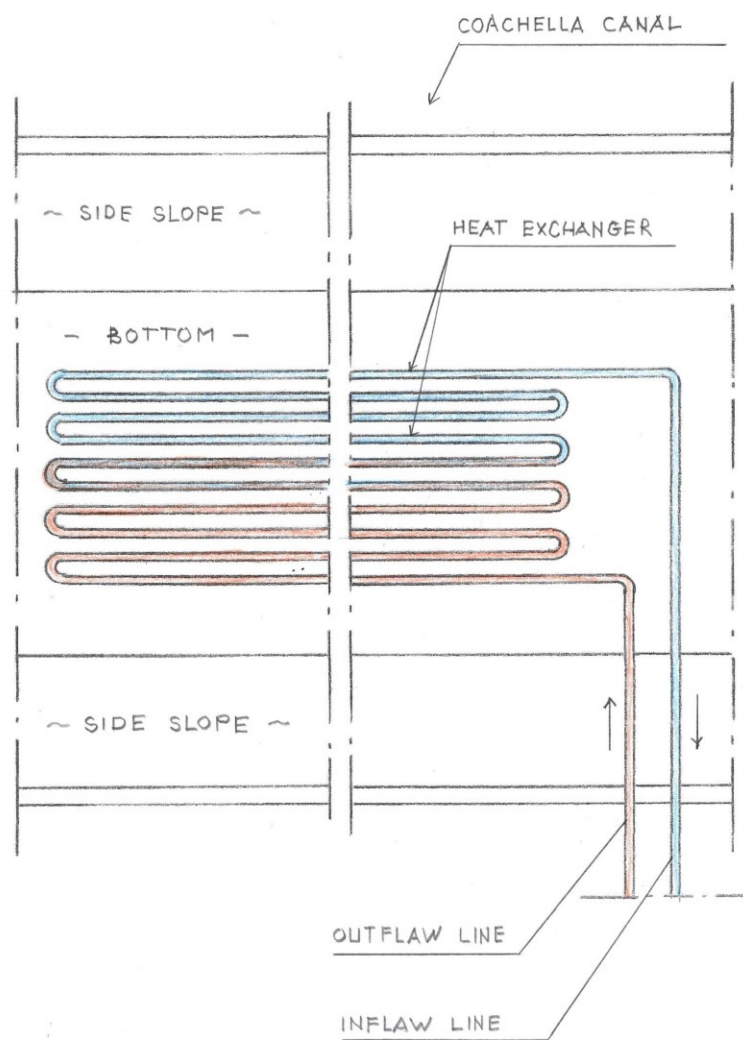


**Figure 18:** Schematic Diagram of a Power Unit closed-loop system in combination with a secondary binary power units and closed-loop cooling system.



**Figure 19:** Cross-Sectional view of the Coachella Canal with a heat exchanger on the bottom.





**Figure 20:** Plain view of a heat exchanger on the bottom of the Coachella Canal

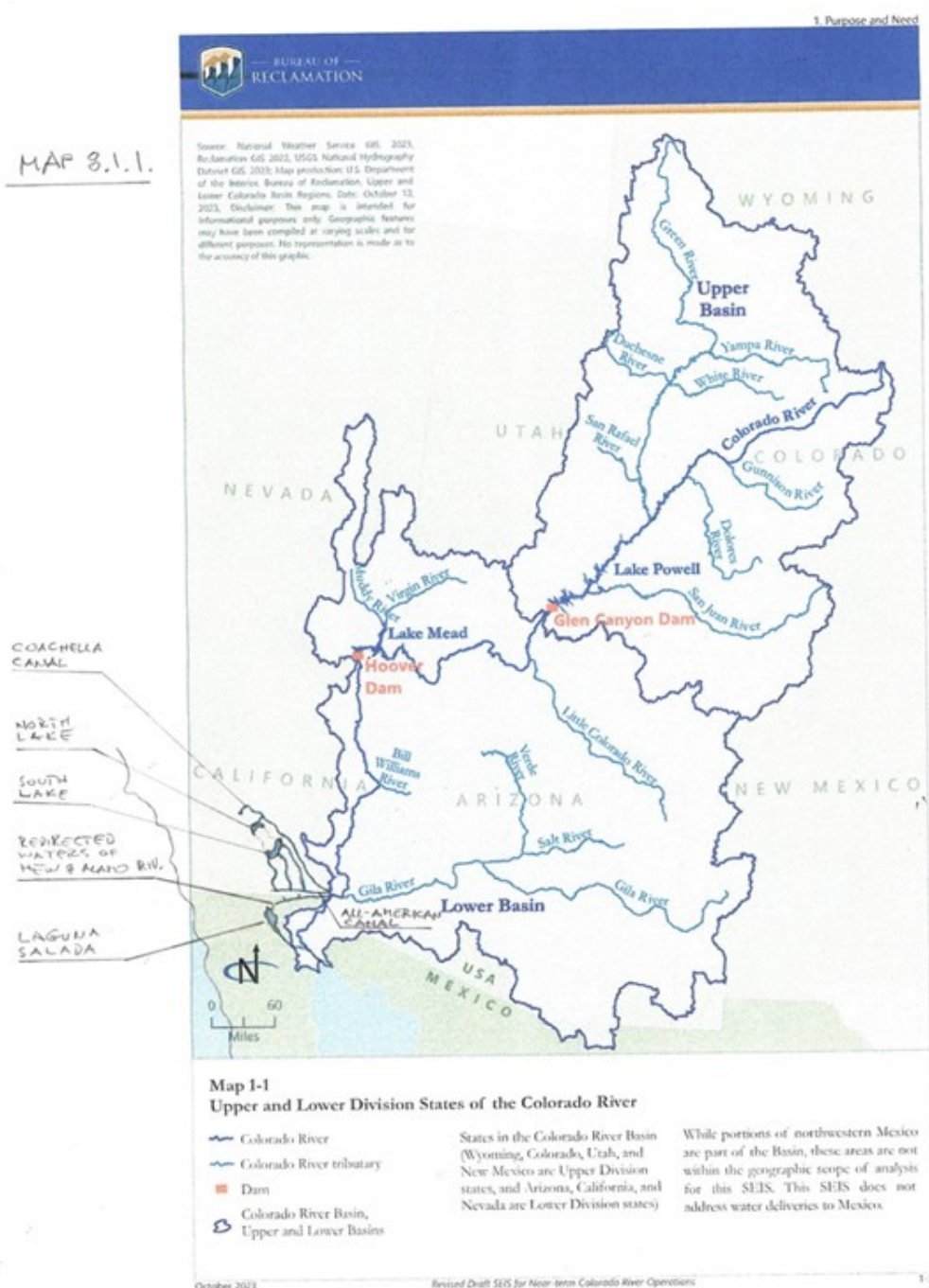
**NOTE:** To explain the function of the presented concept more and the importation of seawater into the Salton Sea which is an essential part of saving and restoring the Salton Sea, and to compare it to the ‘current course of action’ that considers the Salton Sea dying (terminal) Lake here below are included three maps.

The first map Fig. 21 is a Map from the Bureau of Reclamation's recent report – SEIS showing the ‘Upper and Lower Division States of the Colorado River’ that completely excluded (not illustrated) the Salton Sea from the Colorado River Basin. That is utterly wrong because, since its existence, water in the Salton Sea has been flowing in from the Colorado River.

Figures 22 and 23 illustrate the function of the presented concept for the restoration of the Salton Sea.



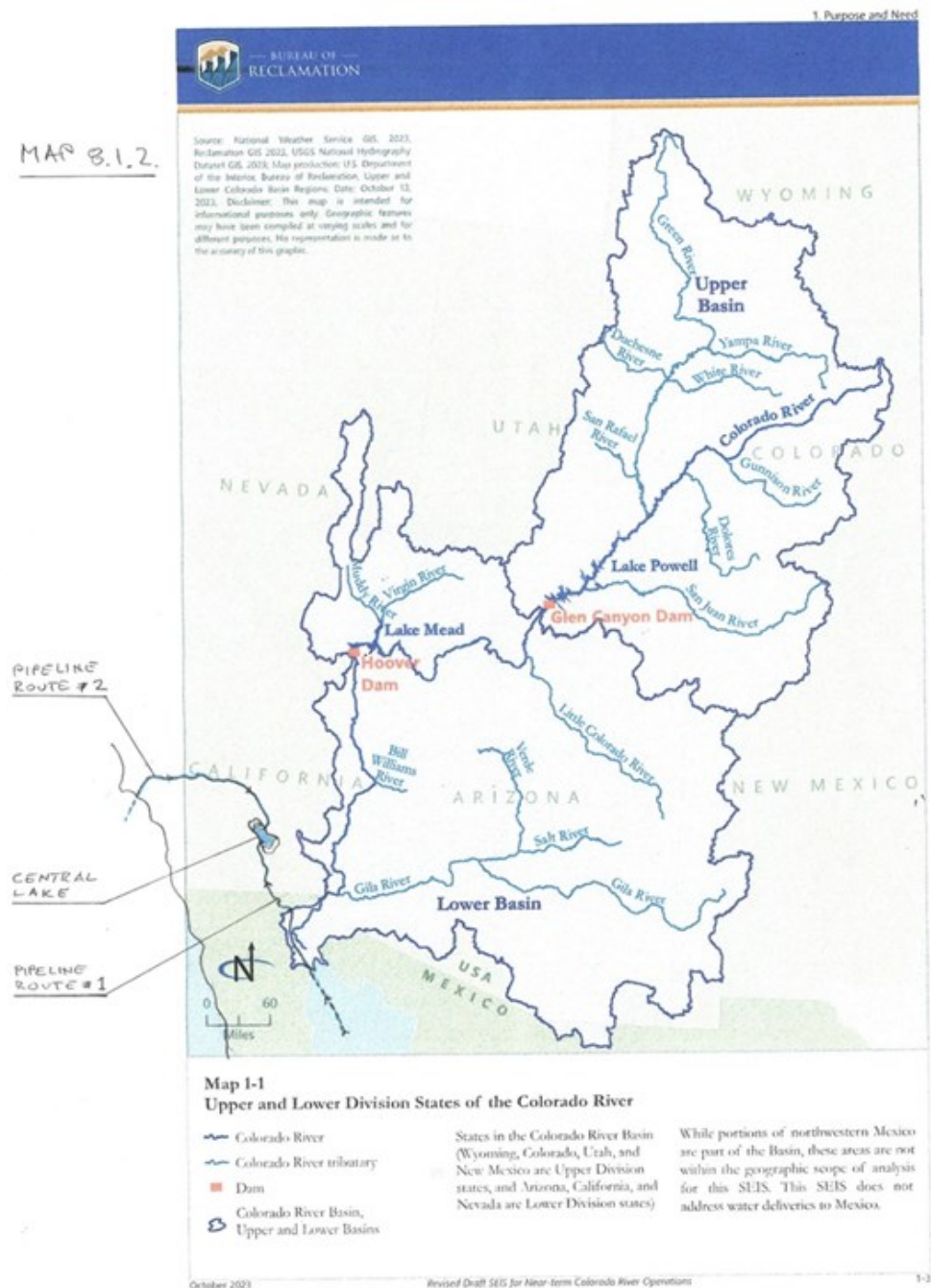
**Figure 21:** Is a Map from the Bureau of Reclamation's recent report – SEIS showing the ‘Upper and Lower Division States of the Colorado River’.



**Figure 22:** Is the Map (8.1.1) showing the distribution of water from the Colorado River through the All-American Canal to the South Lake of the Salton Sea and from the Coachella Canal to the North Lake of the Salton Sea. That is in harmony



with reduced water inflow from the Colorado River. That provides the condition for full restoration of the Salton Sea.



**Figure 23:** Is the Map (8.1.2) showing only the importation of seawater through pipeline Route #1 from San Felipe of the Gulf of California (Sea of Cortez) to the Central Lake (section) of the Salton Sea, and another pipeline Route #2 from

**the Long Beach area to the Central Lake (section) of the Salton Sea. That is how the Salton Sea can be restored to its glory of the 1950s and '60s and beyond despite reduced water inflow from the Colorado River.**

## **5. CONCLUSION:**

Importing seawater is a fundamental phase of the presented comprehensive proposal on which other phases depend. Also, importing seawater is an essential element in providing the necessary water for harnessing geothermal energy in the area and is an essential element for the restoration of the Salton Sea.

The presented pipeline with a diameter of only 48" through Route #1 can import about 1 million acre-feet per year which is enough for the balancing evaporation of the Lake. The pipeline through Route #2 also with a diameter of only 48" can import about 2 million acre-feet per year meaning that about 2 million acre-feet can be used for other purposes such as generation of potable water, which can be used for bottling, farmland, and/or generation of Hydrogen, or replenishing depleting geothermal reservoirs. An essential part of the import of seawater is to use salty water for the extraction of Lithium – a limited amount but continuous.

The presented proposal for the restoration of the Salton Sea is a long-term solution that includes an architectural plan that harmoniously incorporates several breakthrough technologies in the Energy Industry, proven in different applications, but here modified and utilized into a functional self-sustaining Lake. Each of the segments (phases) is essential for the result.

The presented proposal transforms the situation of the Salton Sea from a dying Lake with tremendous consequences and liability (environmental disaster – toxic dust storms, health issues, and economic fold) - into tremendous assets (clean environment and hundreds of billions of dollars in revenue) – costing only about \$15 billion for building it.

## **6. ACKNOWLEDGMENT**

The 3.5 km Temperature Map is courtesy of the SMU Geothermal Laboratory and Dr. David Blackwell, Dallas Texas. The help for the calculations of hydropower is courtesy of Mr. Milan Kangra, a Graduate Mechanical Engineer.

## **7. REFERENCES**

U.S. Patent No. 7,849,690; Entitled: "Self-Contained In-Ground Geothermal Generators" (SCI-GGG); Issued on Dec.14, 2010.

U.S. Patent No. 8,281,591; Entitled: "Self-Contained In-Ground Geothermal Generators" (SCI-GGG); Issued on October 9, 2012.

U.S. Patent No. 8,713,940; Entitled: "Self-Contained In-Ground Geothermal Generators"; Issued on May 6, 2014.

U.S. Patent No. 9,206,650; Entitled: "Apparatus for Drilling Faster and Wider Wellbore; Issued on December 8, 2015.

U.S. Patent No. 9,978,466; Entitled: "Self-Contained In-Ground Geothermal Generator and Heat Exchanger with In-Line Pump; Issued on May 22, 2018.

U.S. Patent No. 9,982,513; Entitled: "Apparatus for Drilling Faster and Wider Wellbore with Casing; Issued on May 29, 2018;

U.S. Patent No. 9,995,286; Entitled: "Self-Contained In-Ground Geothermal Generator and Heat Exchanger with In-Line Pump and Several Alternative Applications; Issued on June 12, 2018.

U.S. Patent No. 11,098,926; Entitled: "Self-Contained In-Ground Geothermal Generator and Heat Exchanger with In-Line Pump used in Several Alternative Applications including the Restoration of the Salton Sea. Issued on August 24, 2021.

Several patent-pending applications.